

T A N C O   A U T O W R A P   S Y S T E M S

1200 MODEL 1992

C/W LIFT ARM

OPERATORS HANDBOOK

AND

PARTS LIST

WD625-M0 692

INDEX

	<u>Page</u>
Safety instructions	1
Technical specifications	2
Pre delivery instructions	3
Transport instructions	3
Machine identification	3
Preparation of a new machine	4
Tractor towing hitch	4
Hydraulic connections	4
Bale Wrap controller	4
Bale Wrap Controller	5
Bale Wrap Controller	6
Operating instructions	7
Loading Sequence	8
Wrapping Sequence	9
Film overlap system	10
Service and Maintenance	11
Film Threading diagram	11
Drive belt tensioning system	12
Quadrant Assembly Instructions...	13
Index Shaft sprocket clearance adjustment	14
Index Shaft disc brake adjustment	15
Hydraulic Circuit chart	16
Hydraulic Components Illustrated	17
Parts List for above	17:1
Lift Arm Hydraulic Components	18
Parts List for above	18:1
50% Overlap system Illustrated (750mm wide film)	19
Parts list for above	19:1
Autowrap 1200 Model	20
Parts List for above	20:1/2
Main Chain Drive Assembly Illustrated	21
Parts List for above	21:1/2
Secondary Chain Drive Assy Illustrated	22
Parts List for above	22:1/2
Brake Arrangement for Indexing Shaft Illustrated	23
Parts List for above	23:1
End Roller Assy Illustrated	24
Parts List for above	24:1
Lift Arm Assembly Illustrated	25
Parts List for above	25:1
Film Dispensing System Illustrated	26
Parts List for above	26:1
Slip Ring Assembly Illustrated...	27
Parts List for above	27:1
Sensor & Magnet Mounting Illustrated	28
Parts List for above	28:1
Cut & Start Unit Illustrated	29
Parts List for above	29:1/2
Cut & Start Mounting Frame Illustrated	30
Parts List for above	30:1
Cut & Start Electrical Circuit	31
Cut & Start Fault Finding Summary	32+32:1
Guarantee	33

## TANCO AUTOWRAP

### GENERAL SAFETY INSTRUCTIONS

Before operating, adjusting or servicing the machine it is important that these instructions are carefully read by those directly concerned.

Whilst every care has been taken in the design of this machine there remains a certain amount of risk to Personell whilst the machine is in use. It is strongly recommended that the user/operator takes all possible precautions to ensure both his own safety and that of others while the Autowrap is operating. The area around the machine should be kept clear at all times and only the operator should be allowed near the machine when working.

The Autowrap is designed and sold for agricultural purposes and as such complies with the definition as laid down for an Agricultural Trailed Appliance. Under this definition the machine is not fitted with brakes or lights. IT SHOULD NOT UNDER ANY CIRCUMSTANCES BE TOWED ON THE HIGHWAY AT SPEEDS IN EXCESS OF 20 m.p.h. (30 km/h).

If the machine is to be towed on the highway out of daylight hours then a suitable lighting board with indicators, stop lights and rear lights should be fixed to the rear of the machine before proceeding.

Bales should be loaded carefully on to the turntable and not dropped from a height.

Owners and operators are advised to contact their dealer regarding any field or service problems.

### SPECIAL SAFETY INSTRUCTIONS

1. Stop engine of tractor before working on machine.
2. Put a suitable prop under raised platform before working in this area.
3. Always raise Lift Arm and fit safety prop before transporting machine on public road.
4. Lift Arm should always be lowered before operating turntable.
5. Ensure platform rollers are paralled to Lift Arm before arm is raised.

### OPERATING SAFETY INSTRUCTIONS

1. Keep onlookers clear of machine at all times, especially when loading and offloading bales.
2. Beware of rotating Turntable.
3. Do not exceed maximum 20 r.p.m. of turntable.

THINK OF YOUR PERSONAL SAFETY AND THAT OF OTHERS AT ALL TIMES

TECHNICAL SPECIFICATIONS

Q1200 Model

Dimensions

Total length - Excluding Bale Mat	...	...	...	...	350 cm
Width - excluding lift arm	...	...	...	...	221 cm
" - lift arm fully raised	...	...	...	...	243 cm
" - lift arm lowered	...	...	...	...	380 cm
Height to top of side (bale guide) rollers					136 cm
" to top of lift arm	...	...	...	...	242 cm

Weight

With lift arm	...	...	...	...	1400 Kgs
Without lift arm	...	...	...	...	1100 Kgs

Wheels

Size	...	...	...	...	10-80. 12
Pressure	...	...	...	...	42 p.s.i.

Lift arm capacity - Axle extended normally	...	...	...	...	400 Kgs
" " " - Axle extended fully	...	...	...	...	500 Kgs

Speed of turntable	...	...	...	...	20 rev/min*
--------------------	-----	-----	-----	-----	-------------

Oil requirement	...	...	...	...	23 litres/min (165 kp cm <sup>2</sup> )
-----------------	-----	-----	-----	-----	--

Attachment to tractor	...	...	...	...	Tractor hitch
-----------------------	-----	-----	-----	-----	---------------

Bale sizes Class Quadrant	...	...	...	...	120 x 120 x 70 cm max 500 Kgs
---------------------------	-----	-----	-----	-----	----------------------------------

Film (Width of Roll)	...	...	...	...	750mm
----------------------	-----	-----	-----	-----	-------

\* The speed of rotation can be varied to suit various conditions but on no account should it exceed 20 r.p.m. (Speeds in excess of 20 r.p.m. will void warranty).

### PRE-DELIVERY INSTRUCTIONS

1. Check that machine complies with customers requirements.
2. Check tightness of all nuts and bolts.
3. Grease all lubrication points making sure index rollers and sprockets are greased.
4. If for operation with a John Deere tractor, ensure valve is converted to closed centre.
5. Check tyre pressures.
6. Check that non-return valve is fitted in return line.
7. Check that film dispenser is correctly fitted with marked gear box at top, and that slave roller is adjusted to avoid contact with the gear box covers.
8. Check that all guards are in place.
9. Check that all operation and safety stickers are intact.
10. Check Serial No. plate and note Serial No. of machine for record purposes.
11. Check that bale off loading mat is fitted.
12. Connect to hydraulic power source and check that everything functions properly and in accordance with instruction stickers.
13. Inform operator of Max speed 20 RPM

### TRANSPORT INSTRUCTIONS

1. Never use straps around the machine when lifting. Use only the following lifting points:- Tow hitch and two sockets on each side of main frame at rear for trailed models.
2. When the machine is towed on the road the Lifting Arm (if fitted) must be in the fully raised position, the safety prop fitted and the axle returned to narrowest position.
3. Raise the Parking Jack on trailed models before moving machine.

### MACHINE IDENTIFICATION

The Serial Number plate is located on main frame forward of offside wheel on trailed models.

Always refer to this number when ordering parts.

### PREPARATION OF A NEW MACHINE

1. Check tyre pressures.
2. Check height of film mast to ensure that bottom of film just clears top triple roller assemble.
3. When connected to a John Deere\* tractor the Inlet Plate must be converted to closed centre. See Pages 13
4. On Trailed Model. Extend axle on same side as Lift Arm by powering down Lift Arm sufficiently to raise wheel clear of ground. Remove pin, pull out wheel to first position for 400 kg. bales or to second position for 500 kg. bales. Replace pin and locking clip, raise Lift Arm. For extra stability on hilly ground it is recommended that the wheel opposite to the lift arm be ballasted.

### TRACTOR TOWING HITCH

IMPORTANT Set drawbar height so that turntable is sloping slightly to rear. This setting will assist the bale to turn over. To achieve this an adjustable hitch is fitted. The machine should be fitted to the tractor hitch.

6. Fit actuator mounting bracket for cable controls in a suitable position on tractor wing. Attach actuator assembly to mounting bracket.

### HYDRAULIC CONNECTIONS

Connect the feed and return hoses from the Autowrap valve to the tractor's double-acting facility.

NOTE: The return hose is fitted with a non-return valve to protect the Autowrap from damage in the event of incorrect connection to tractor hydraulics.

\*N.B. For John Deere the hydraulic circuit must be adapted as in 3 above\*.

NOTE:\* To ensure maximum efficiency and length of life of hydraulic components this machine requires a clean supply of hydraulic oil. IT IS RECOMMENDED THAT THE TRACTOR HYDRAULIC FILTER ELEMENT BE REPLACED AND THEREAFTER MAINTAINED IN ACCORDANCE WITH THE MANUFACTURERS RECOMMENDATIONS.

### BALE WRAP CONTROLLER

7. Fit bale wrap controller in a suitable position inside tractor.
8. Connect the two core power supply cable directly to the battery terminals, ensuring correct polarity is used.
9. The 6 pin plug on long cable from autowrap should be plugged into socket on bale wrap controller box.

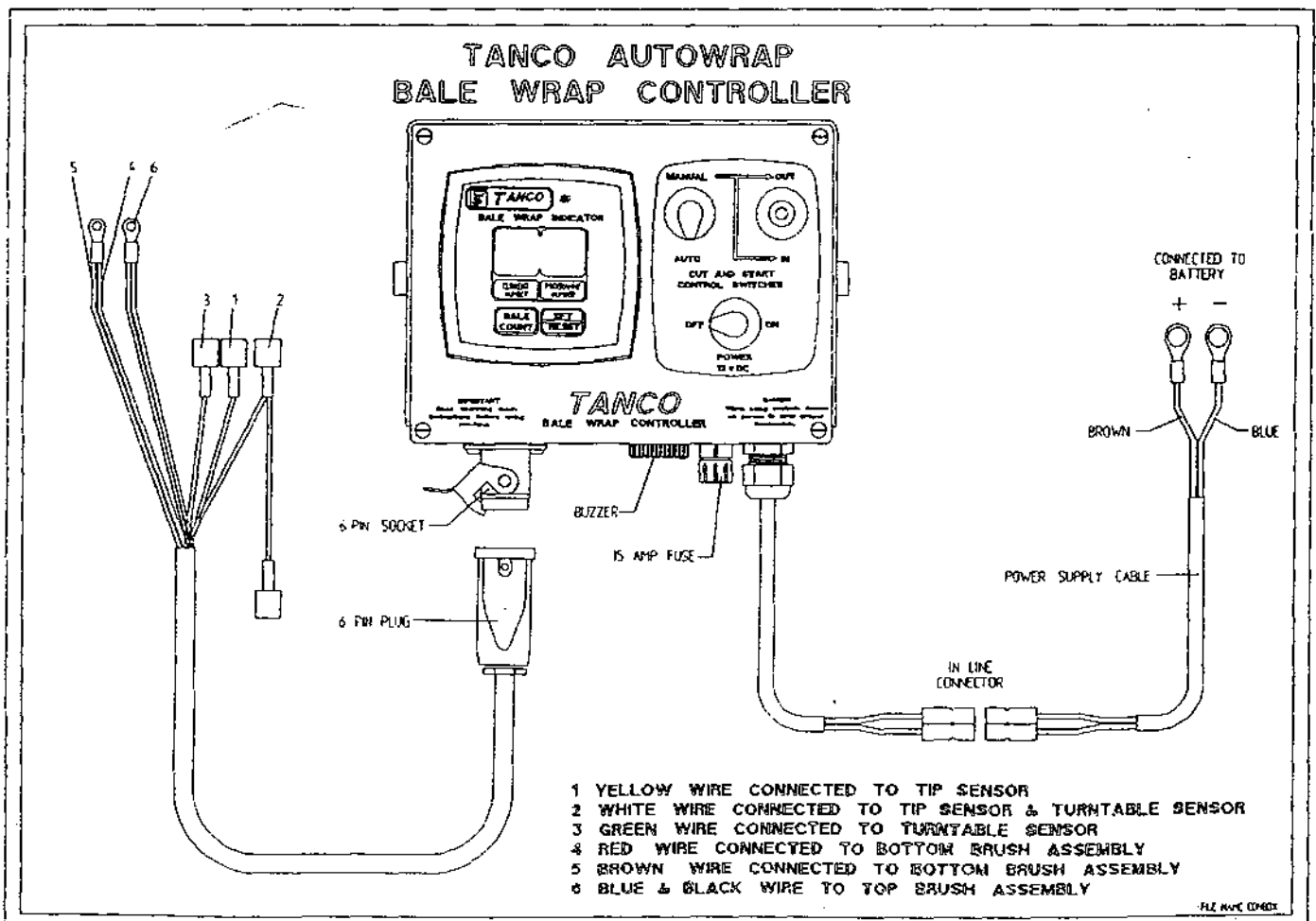
### Bale Wrap Controller:

Connect direct to battery - as per operating instructions and switch on.

Note that it is preset to 16 which is the number of turntable revolutions required to fully wrap a square or round bale using 750 film with 4 layers. This number can be adjusted up or down by pressing the star sign, holding it down, and pressing the set/reset button. See attached film application chart

To enable you to understand how the controller works, here is a brief resume of its functions:

- (1) After two revolutions of the turntable the actuator pushes open the Cut and Start, this action takes 8.5 seconds until the latch engages, then after 6 revolutions of the turntable, the actuator closes for a period of 6.5 seconds and stops in the rest position. When the turntable is tipped, the magnet operates the sensor which activates the linear actuator which closes fully, and in doing so, trips the latch releasing the gripper arm which slams closed under the spring pressure, cutting the film and, at the same time gripping the film for the next bale.

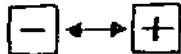


The Bale Wrap Controller has a total of seven functions to control.

To access these functions press/hold \* button and switch on, then release \* button.

A chevron  $\nabla$  appears at the left hand side of the display windows; - this may be moved across the display from left to right by repeatedly pressing \* button.

The seven chevron positions have specific functions and the time for each function may be set by the two buttons at the bottom of the display screen.



Reading from left to right the chevron positions are as follows:

- ✓ (1) Indicates number of turns to activate motor = 2
- ✓ (2) Indicates the number of seconds it powers out until the latch engages = 8.5
- ✓ (3) Indicates the number of revolutions of the turntable before the motor reverses = 6
- ✓ (4) Indicates the number of seconds required to reverse to the park position = 6.5
- ✓ (5) Indicates the number of seconds from the tipping signal until the motor is fully closed = 1.5
- ✓ (6) Indicates the number of revolutions before the set figure at which the buzzer sounds ie. set at 22, sounds at 21 = 1.
- (7) No chevron appears but letter N appears. This indicates "Non-Auto Reset" and does not need to be changed; it means that you can go past the preset number of revolutions eg. if set for 22 and you decide to do a few more turns to ensure bale is fully wrapped, you can do so without upsetting the programme.

Note: The act of tipping off the bale completes the programme of functions so if you are demonstrating how the unit works, always finish up by passing a magnet over the trip sensor when you will notice the display return to the preset figure in the right display and to 0 in the left one.

Finally, to lock all functions into the controllers memory, switch power off and back on again.



## OPERATING INSTRUCTIONS

1. Fit roll of film and thread through the Dispenser roller assembly by following the instruction label on the film mast.
2. Move power switch and bale wrap controller to "on" position and select auto mode with left hand top switch.

NOTE: For test purposes it is possible to power cut and start in and out manually. Position left hand top switch in manual mode and use right hand top switch to power cut and start in and out. Be sure to return to auto mode before commencing wrapping.

3. The bale wrap controller is preset before leaving factory to 16 revolutions, for Claas Quadrant bale.
4. Power down Lift Arm until wheel is clear of ground and adjust wheel outward to appropriate setting for bale weight. See para 4, page 4.
5. Adjust tractor engine speed to give turntable speed of 16 - 18 r.p.m.  
NOTE: Speeds in excess of 20 r.p.m. will void Warranty.
6. Position turntable with cut and start unit facing front of machine, and attach film tag end to gripper section of cut and start unit.
7. Rotate turntable anticlockwise through 90 degrees and stop turntable with cut and start unit opposite to lift arm.
8. Locate bale on lift arm. See loading sequence on page 8
9. Start wrapping, turntable rotation clockwise see wrapping sequence page 7. Film tension is automatically set so that width of film applied to the bale stays at a constant width of 630mm-640mm for 750mm wide film roll.
10. Continue wrapping until signal from bale wrap indicator sounds after which one further revolution of turntable is required. Stop when bale is lying on cut and start roller and with cut and start unit facing towards front of machine and film aligned with gripper section of cut and start unit. See wrapping sequence page 7.
11. Tip bale from machine. When the machine is almost fully tipped the cut and start unit grips and cuts the film and the bale is then unloaded onto the bale mat.
12. Lower the turntable and rotate anticlockwise through 90° and stop with cut and start unit opposite to lift arm.
13. Repeat operations 8 - 12 as required.

NOTE: The film end need only be attached at the start of a roll, after that the sequence is automatic.

### WARNING LIFT ARM

The lift arm is designed to pick up and position Claas bales on edge on the turntable prior to wrapping and to raise the machine while empty, to facilitate adjustment to sliding axle. It is not intended to be used for transporting bales over distances or for use as a stabiliser whilst wrapping.

Therefore any use of the lift arm outside its primary function will be deemed to be abuse and will void all warranty.

# LOADING SEQUENCE FOR CLAAS QUADRANT BALES

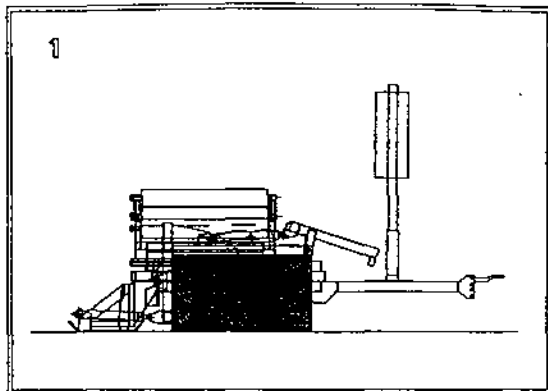


Fig. 1

With the main loading arm dropped down so that it rests lightly on its skids and with the gripper arm raised to a horizontal position, the wrapper is driven alongside the bale so that it is gathered snugly into the arm.

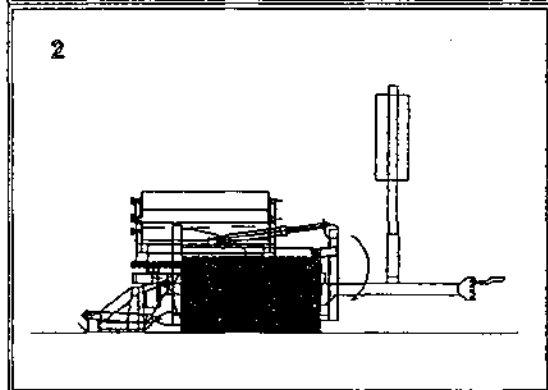


Fig. 2.

The gripper arm is powered down so that it squeezes the bale against the rear of the frame.

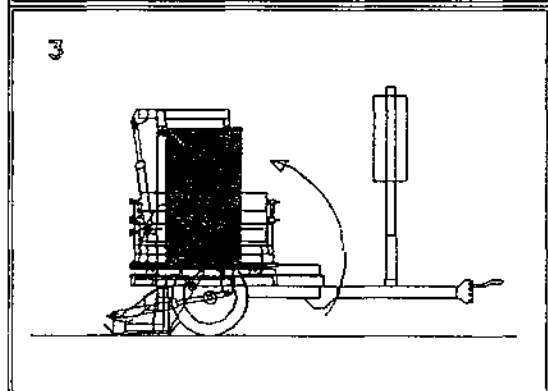


Fig. 3.

The bale gripper frame is raised through  $90^{\circ}$  thus lifting the bale into an upright position.

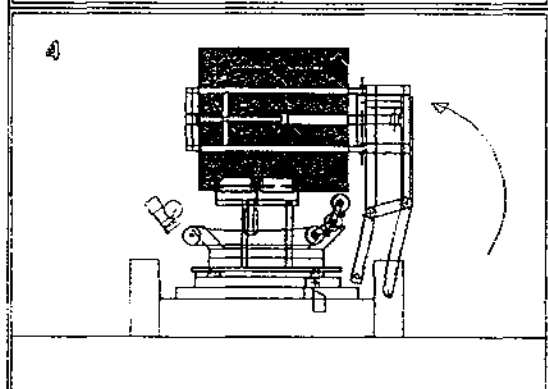


Fig. 4.

The complete loading arm is then raised upward, moving the bale in an arc over the turntable so that it is in an upright position between the top rollers of the triple roller assemblies.

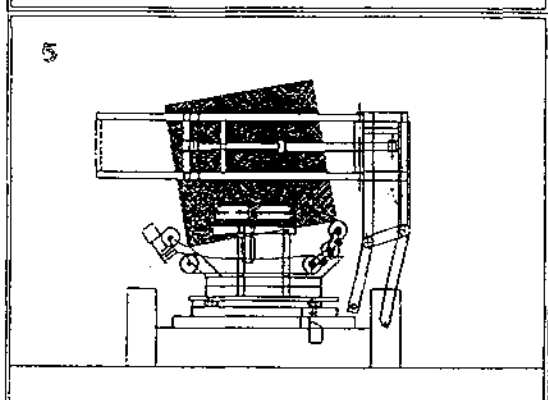


Fig. 5.

The gripper arm is then opened allowing the bale to slide down between the roller assemblies and ideally with one end resting on the double rollers and the other end down on the bale belt. The complete loading arm is then moved clear of the turntable and ideally set ready for the next bale before wrapping commences.

Warning: This loading arm is designed to load bales while the wrapper is stationary and not while on the move. Failure to observe this will lead to premature break up which will not be covered by warranty.

WRAPPING SEQUENCE FOR A/W 1200 WITH CLAAS QUADRANT BALES

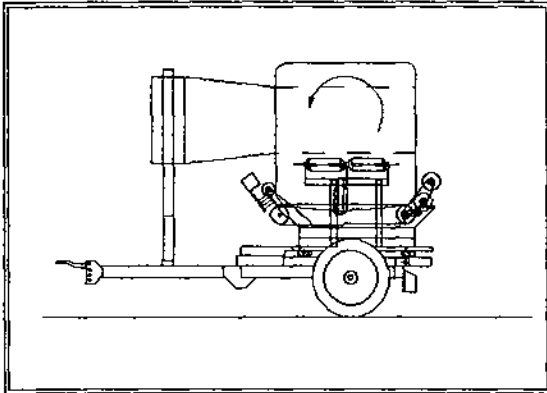


Fig.1

With the film end securely gripped by the gripper of the cut & start and with the turntable rotating clockwise, film is drawn through the automatic pre stretcher by the bale, which itself turns a given distance twice per turntable revolution, continually presenting fresh portions of the bale to be covered by the film.

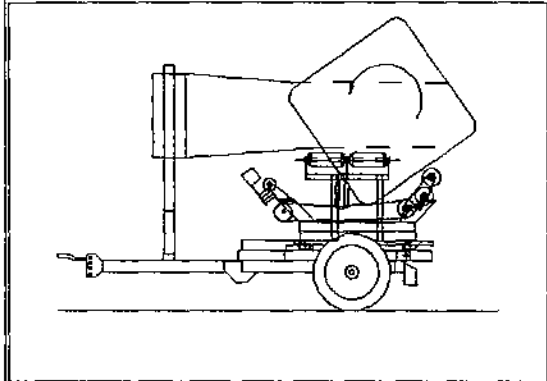


Fig. 2 & 3

The bale climbs up the double rollers, past the point of balance then tips over onto the single roller opposite and keeps moving in this manner for the recommended 16 revolutions, at which point ideally, the bale will be resting on top of the single roller as shown in Fig.3. The turntable is then stopped with the open cut & start lined up under the film.

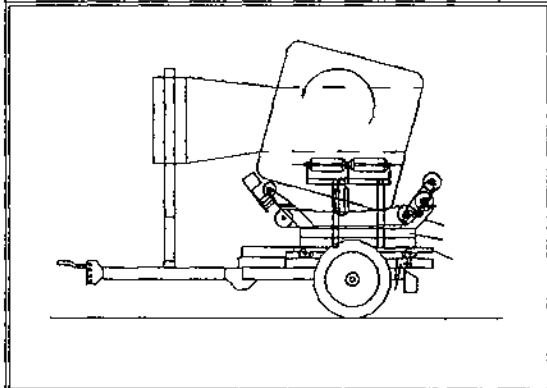


Fig.4

The turntable is tipped, and the film is gathered up by the extended cut & start rod.

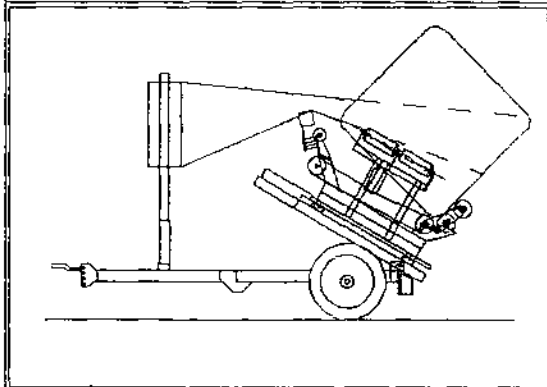
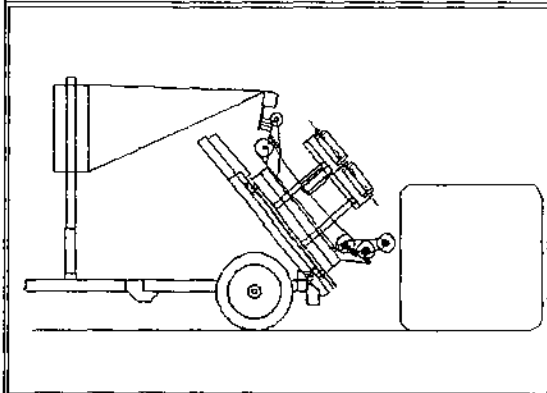


Fig.5

When the film is fully gathered, the cut & start snaps closed, gripping the film for the next bale and also cutting the film to release the bale to tip over the top roller which free wheels allowing the bale to roll off and onto the drop mat.



FILM OVERLAP SYSTEM

The Autowrap is fitted as standard with the 2 x 2 x 50% film overlap system. This is achieved by means of two indexing quadrants fitted with indexing rollers (see page 15 & 16) which ensure the correct number of film layers are applied to the bale after a specific number of revolutions of the turntable.

For silage bales we recommend the application of a minimum of four layers of film.

Bale	Width of Film Roll	Bale Wrap Indicator Setting (Revs)
Claas Quadrant 120cm x 120cm x 70cm	750mm	16

IMPORTANT

The above recommendations are only offered as a guide to correct wrapping of silage bales and the manufactures accept no responsibility for variations that may arise and the consequences of same. They are based upon turntable speeds of up to 20 r.p.m., and a minimum film width of 630mm applied to the Bale. See Page 5 and 7, for proper maintenance of the machine and its correct operation.

It is the responsibility of the operator to ensure the correct number of wraps are applied, as variances can occur with fluctuations in speed of rotation, film quality and tensioning, shape and density of bale etc.

SERVICE AND MAINTENANCE

1. All nuts and bolts should be tightened after some hours in use and thereafter regularly.
2. Wheel pressure should be normally kept at 42 psi depending on bale weight and field conditions.
3. Inspect moving parts for wear on daily basis.
4. Remove hydraulic motor guard daily and clean loose materials from drive pulley and tensioner roller. Replace guard and lock in position while ensuring it does not collide with rotating turntable assembly.

4. Lubrication

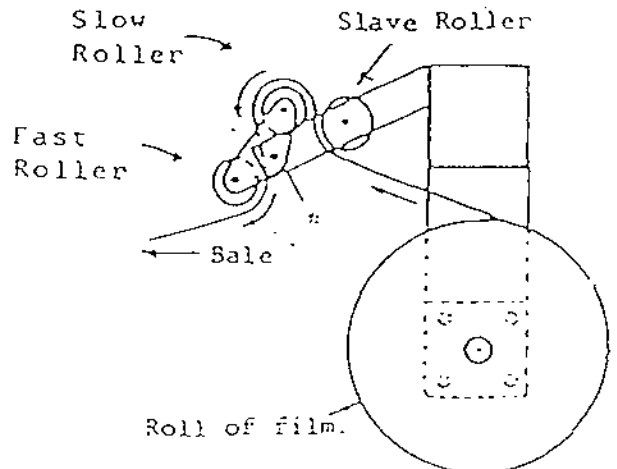
Drive chain & sprockets	-	grease every 24 hours
End rollers	-	" " " "
Main rollers	-	" " " "
Hinge pins on Lift Arm	-	" " " "
Hinge pins on main tip frame	-	" " " "
Hydraulic rams	-	" " " "
Wheel Bearings	-	" " " "
Film Reel Assy.	-	" " " "
Dispenser slave roller	-	oil every 24 hours
Dispenser gearboxes	-	grease sparingly each month
Indexing sprocket & pegs	-	grease daily
Main spindle	-	grease every 4000 - 5000 bales

6. Adjustments

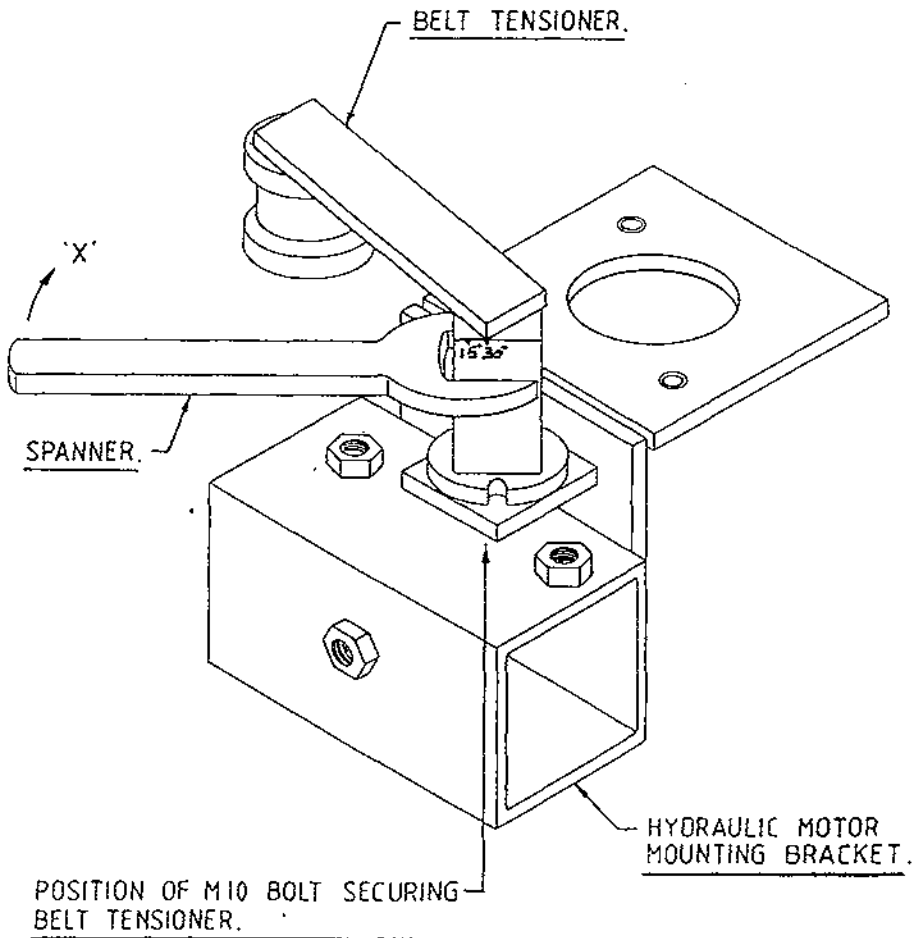
Drive chain tension	:	Adjust after first days work then every 50 hours
Disc brake spring	:	Adjust until bale slippage is minimal see page 11
Toothed drive belt	:	Adjust tension if slippage occurs see page 8
Main conveyor belt	:	Tension by moving idler roller up slope being careful to keep it parallel to the main drive roller
Index shaft sprocket clearance	:	Ensure a gap of 3mm between cam follower and 19 tooth sprocket with machine loaded with 500 kg bale. See page 10

6. Film Dispenser

- \* Fit with plunger at top.
- \* Apply One Shot of Multi-Purpose Grease each month to Gearboxes.
- \* Wash Rollers often to avoid build up of Tack from film.
- \* Follow Film Threading Diagram.

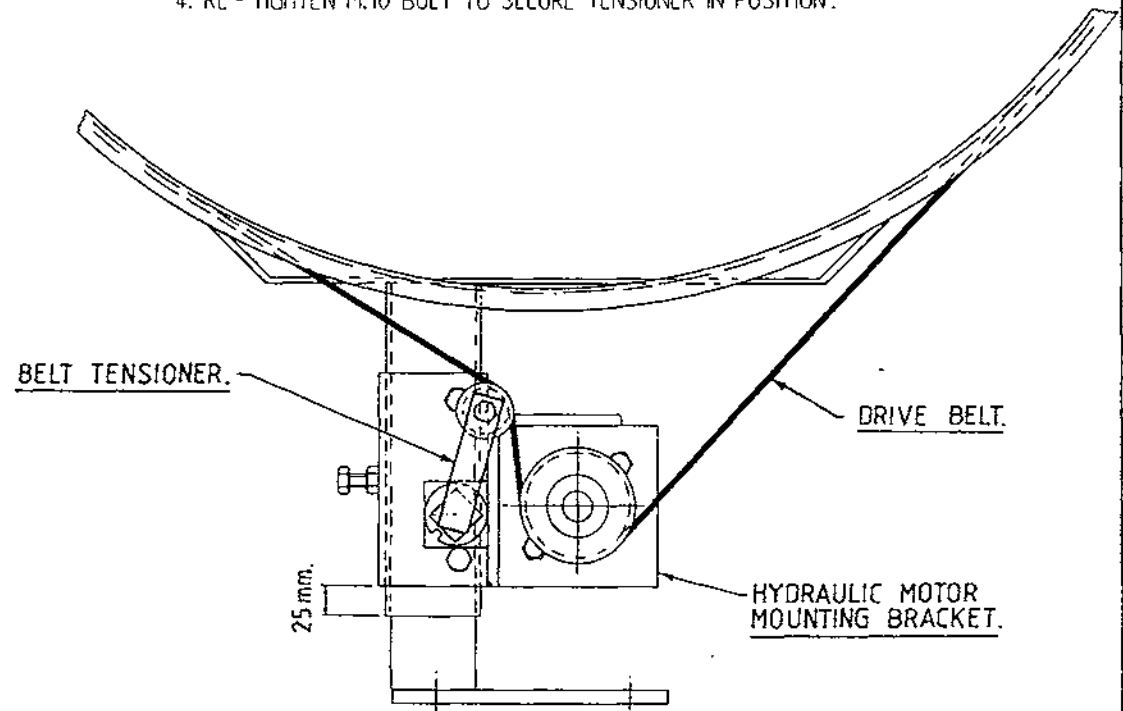


# TANCO AUTOWRAP 1992. DRIVE BELT TENSIONING SYSTEM.



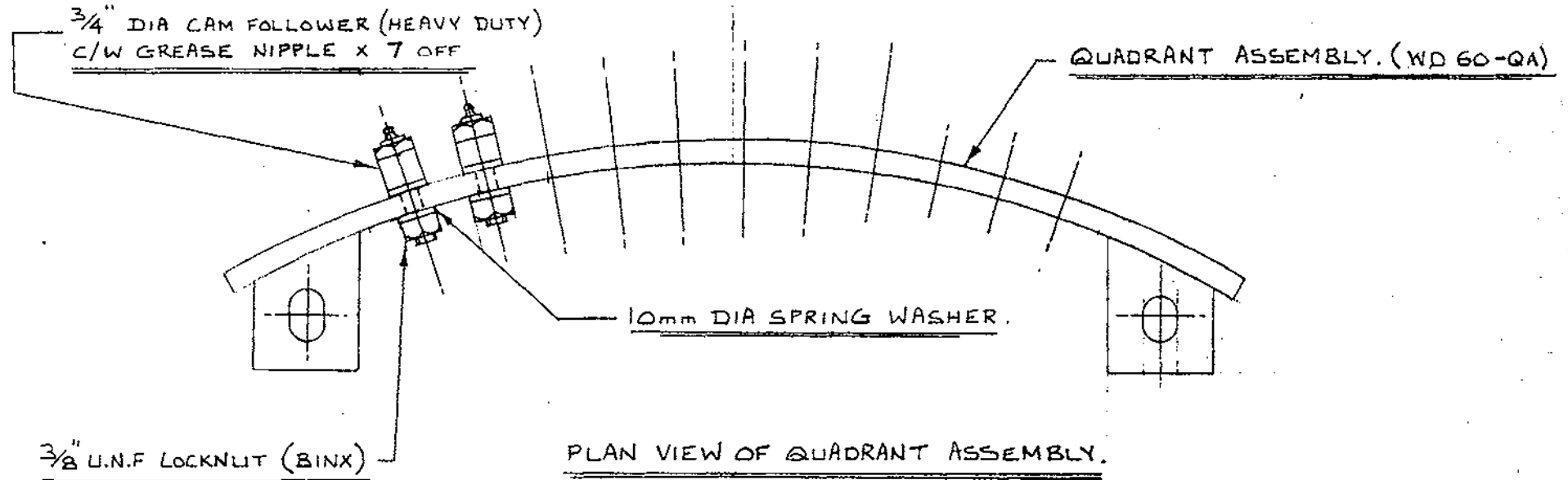
## BELT TENSIONING PROCEDURE

1. CHECK THAT HYDRAULIC MOTOR MOUNTING BRACKET IS SECURED IN POSITION USING 25mm DIMENSION AS SHOWN.
2. LOOSEN M.10 BOLT SECURING BELT TENSIONER.
3. TENSION BELT BY ADJUSTING TENSIONER USING SPANNER IN DIRECTION OF ARROW "X" UNTIL SETTING OF 25°-30° IS REACHED.
4. RE - TIGHTEN M.10 BOLT TO SECURE TENSIONER IN POSITION.



NOTE:

WHEN FITTING  $\frac{3}{4}$ " DIA CAM FOLLOWERS  
TO QUADRANT ASSEMBLY IT IS NECESSARY  
TO TORQUE NUTS TO 26 FT/LB.

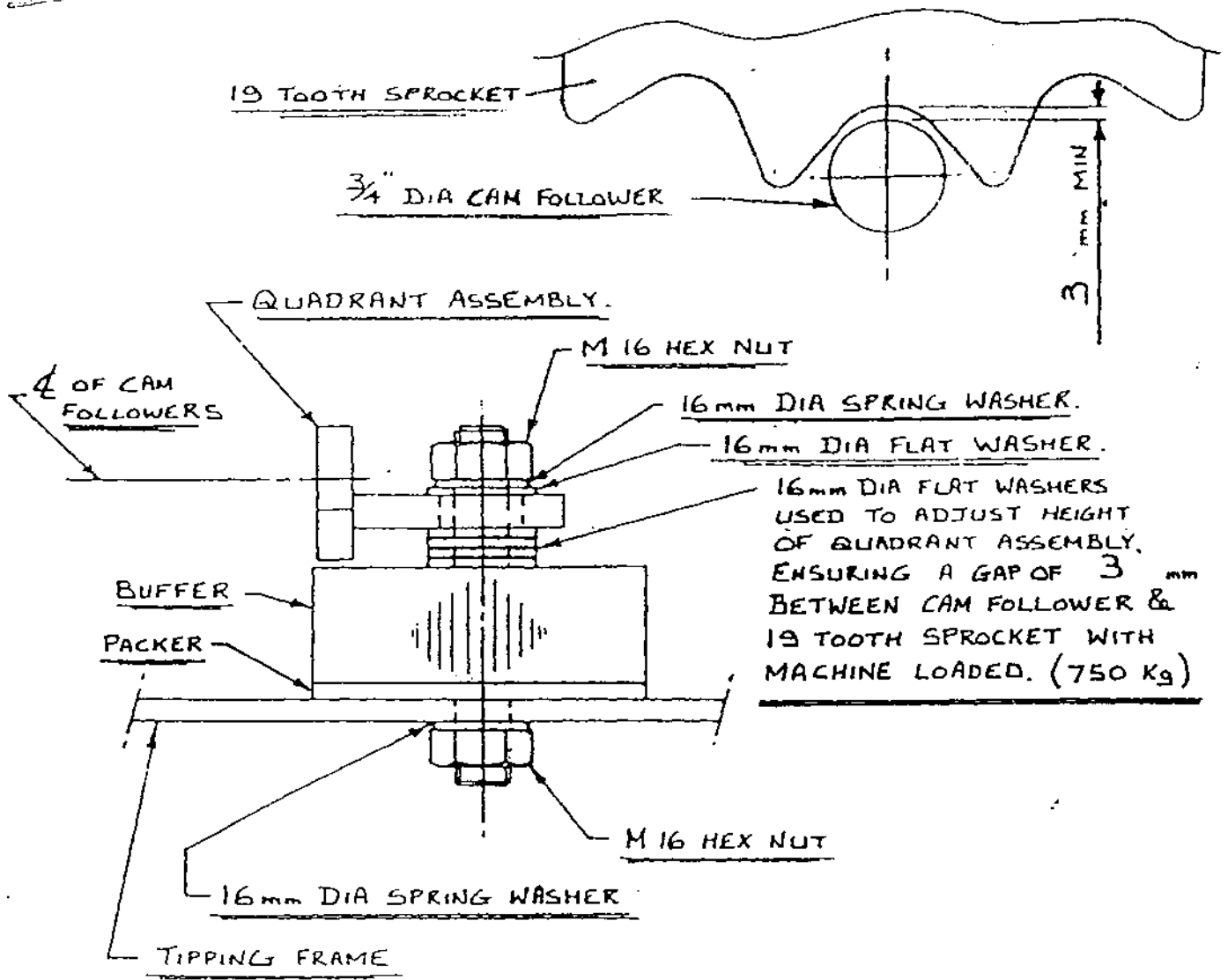


NOTE:

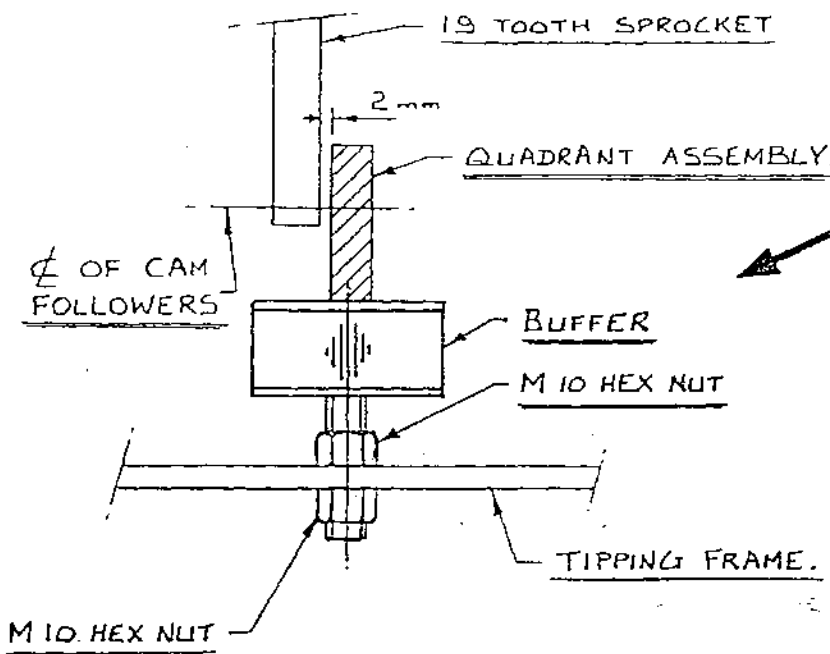
ENSURE THAT M20 HEX Hd BOLT X 110mm  
LONG USED TO MOUNT 4" DIA SUPPORT  
WHEELS ON TURNABLE ASSEMBLY IS  
POSITIONED WITH BOLT HEAD TO INSIDE  
TO AVOID FOULING  $\frac{3}{4}$ " DIA CAM  
FOLLOWER.

TANCO AUTOWRAP (1992 MODEL)

QUADRANT ASSEMBLY INSTRUCTIONS.



TANCO AUTO WRAP. 1992  
 INDEX SHAFT. SPROCKET CLEARANCE ADJUSTMENT.

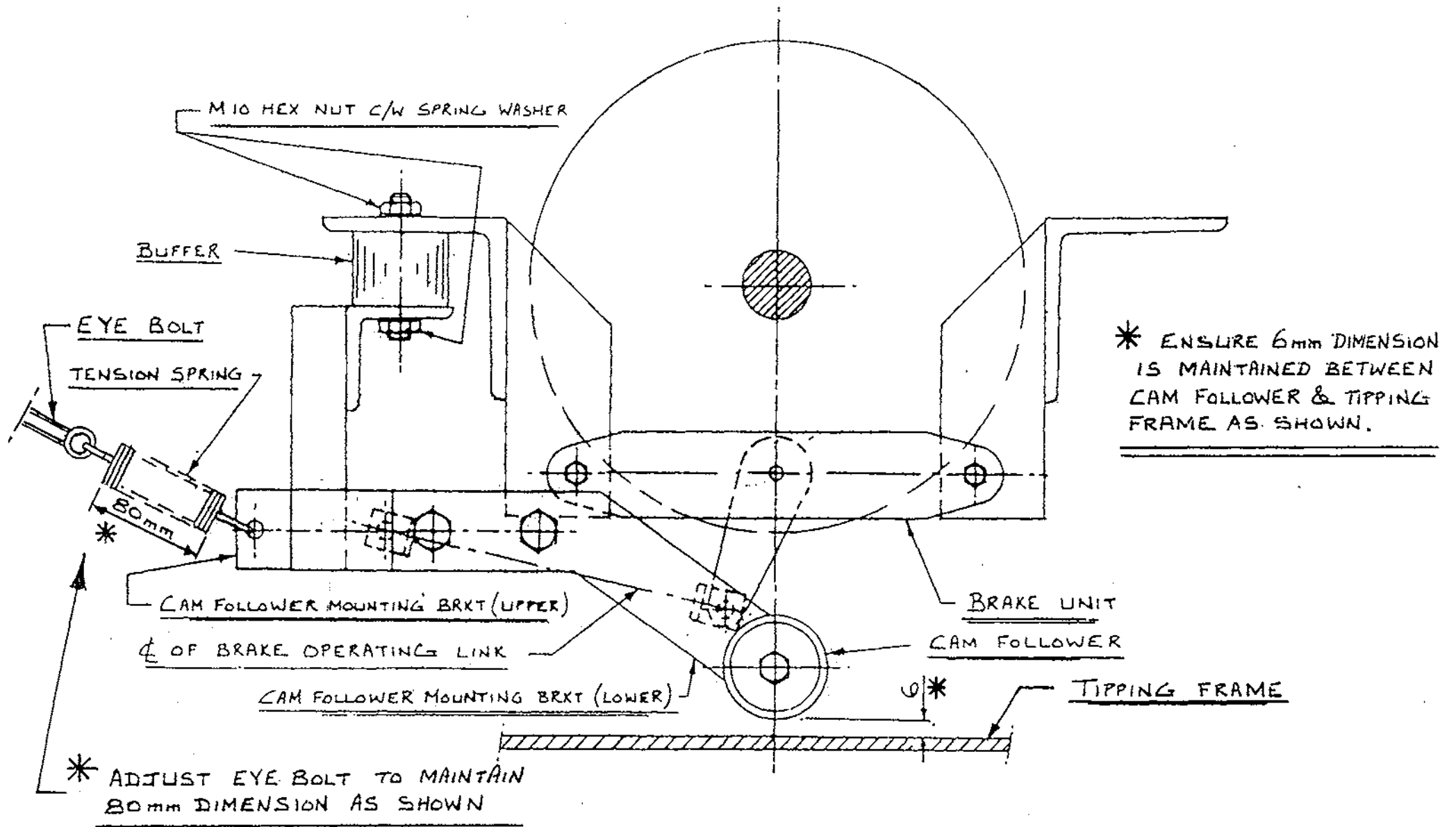


NOTE:

AFTER SETTING QUADRANT POSITION ADJUST CENTRE BUFFER HEIGHT UNTIL IT TOUCHES LOWER EDGE OF QUADRANT ASSEMBLY AS SHOWN.



TANCO AUTO WRAP (1992)  
INDEX SHAFT, DISC BRAKE ADJUSTMENT



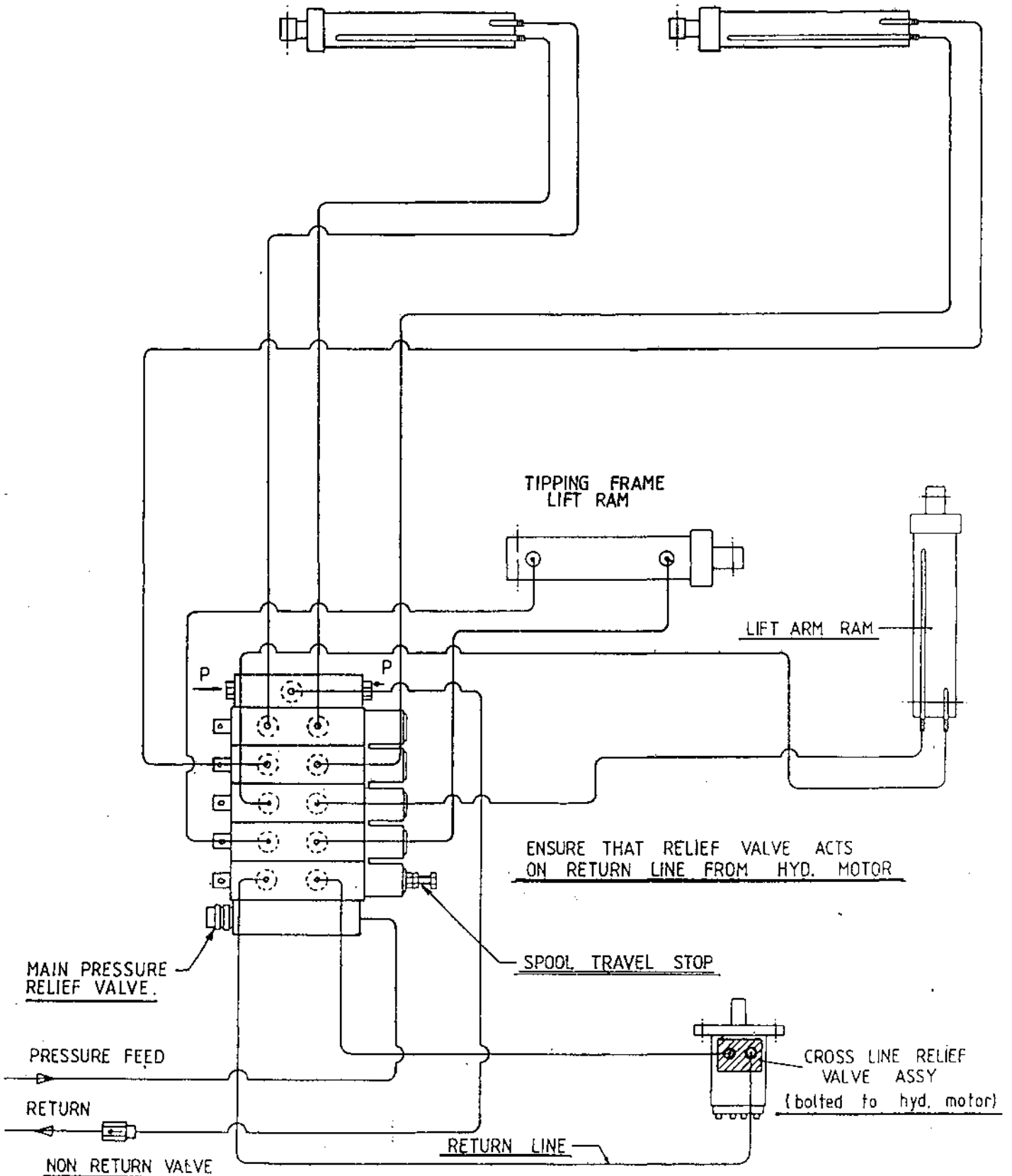
# TANCO AUTOWRAP 1200 MODEL HYDRAULIC CIRCUIT

**NOTE:** (A) When connected to a John Deere tractor remove existing plugs marked 'P' from both ports on return plate and replace with closed centre plugs to convert valve to closed centre.  
The main pressure relief valve must then be adjusted to a pressure setting higher than tractor main pressure relief valve.

(B) Spool valve stop is factory set and must not be tampered with.

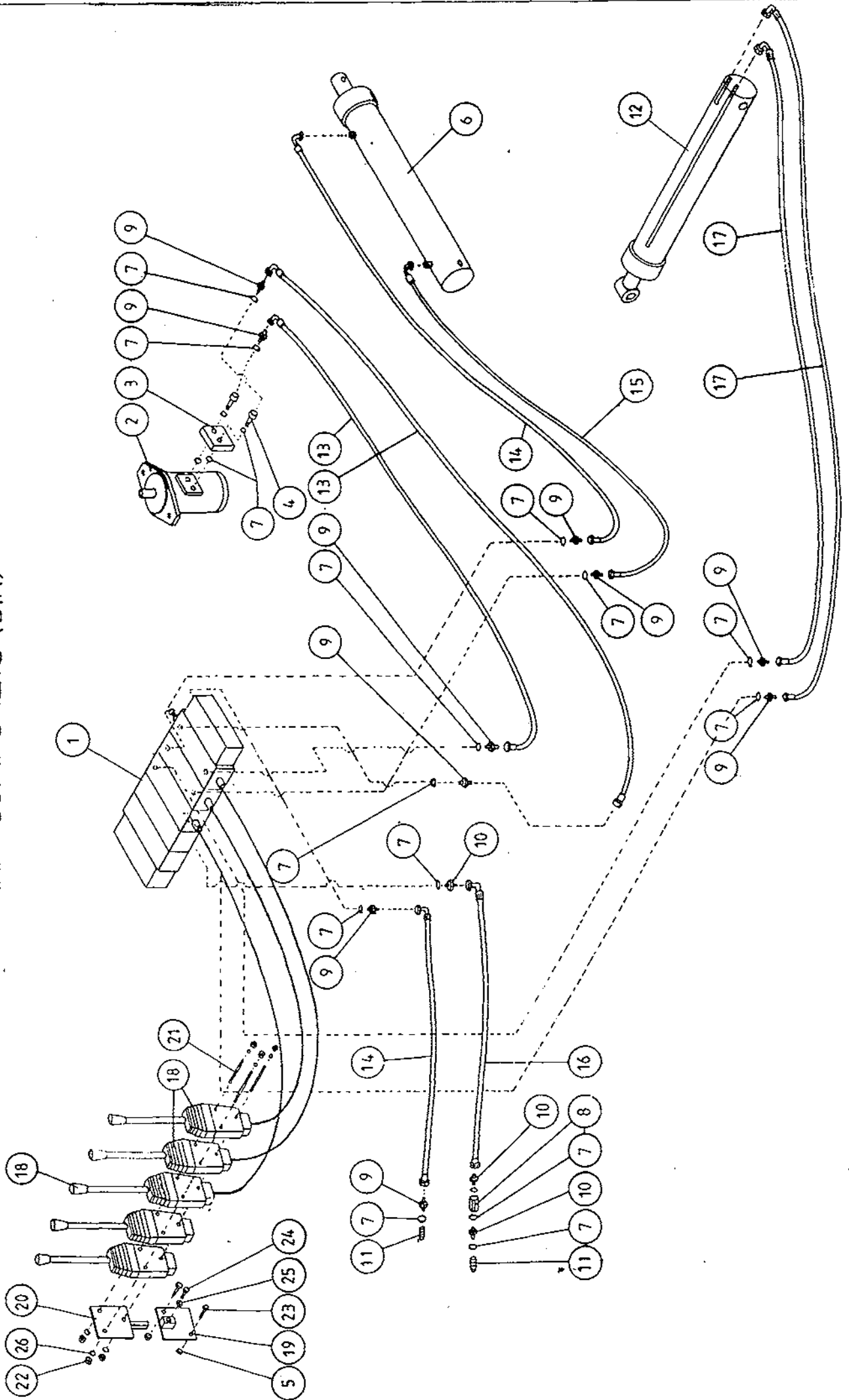
GRAB SECTION  
HYD. RAM

GRAB FRAME  
HYD. RAM





TANCO AUTOWRAP 1200 MODEL  
HYDRAULIC COMPONENTS (DIN)



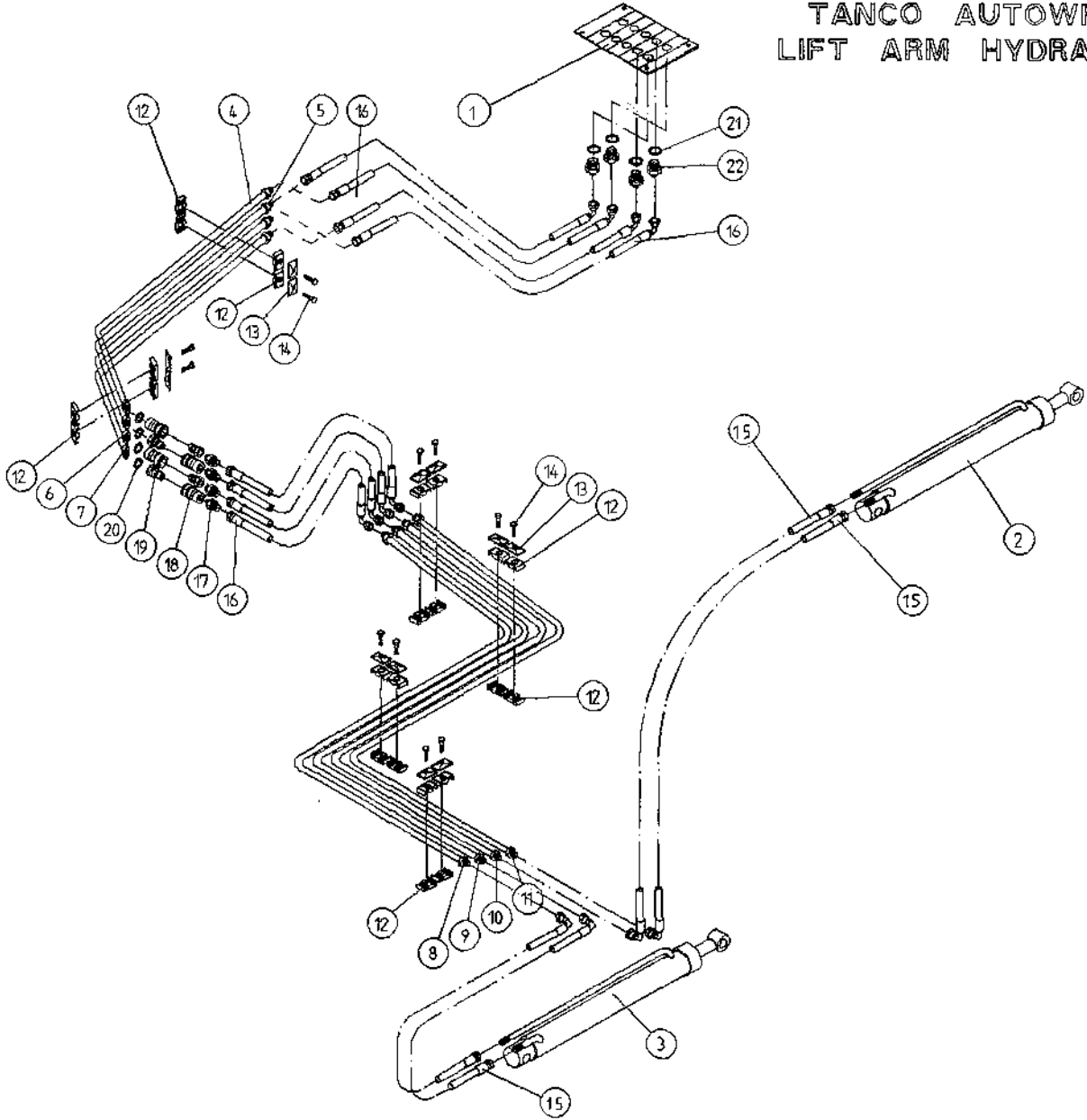
TANCO AUTOWRAP 1200 MODEL (TRAILED) 1992

HYDRAULIC COMPONENTS (DIN)

PARTS LIST

<u>ITEM NO.</u>	<u>DESCRIPTION</u>	<u>QTY.</u>	<u>PART NO.</u>
1.	5 BANK SPOOL VALVE (DIN) C/W LEVERS	1	Z01-03-018D5
2.	HYDRAULIC MOTOR (C.L.)	1	Z01-02-AR75
3.	CROSS LINE RELIEF VALVE	1	Z01-03-002
4.	1/2" BSP BOTTOM BANJO BOLT (SPECIAL)	2	
5.	M10 LOCKNUT	2	Z23-10
6.	HYD. RAM (FOR TIPPING FRAME)	1	Z01-01-AR687
7.	1/2" DOWTY WASHER	18	Z01-04-03
8.	1/2" NON RETURN VALVE	1	Z01-03-017
9.	1/2" x 3/8" ADAPTOR	10	Z01-06-06-08
10.	1/2" x 1/2" ADAPTOR	3	Z01-06-08-08
11.	1/2" MALE END Q/R COUPLING	2	Z01-15-081
12.	HYD. RAM (FOR LIFT ARM)	1	Z01-01-AW
13.	96" ST/90 3/8" D/W HOSE	2	Z38-R2-96-S9
14.	84" ST/90 3/8" D/W HOSE	2	Z38-R2-84-S9
15.	72" ST/90 3/8" D/W HOSE	1	Z38-R2-72-S9
16.	84" ST/90 1/2" S/W HOSE	1	Z12-R1-84-S9
17.	120" ST/90 3/8" D/W HOSE	2	Z38-R2-120S9
18.	3 1/2" METER CABLE C/W ACTUATOR	5	Z004-03-0075 Z004-03-009 Z004-03-014
19.	ACTUATOR MTG. BRACKET BOTTOM HALF	1	WD60-AMBB
20.	ACTUATOR MTG. BRACKET TOP HALF	1	WD60-AMBT/WSB150
21.	TIE BOLT (M8 x 235mm LONG)	3	
22.	M8 HEX NUT	6	Z18-08
23.	M10 HEX HD. SETS x 40mm LONG	2	Z26-064S
24.	M12 HEX HD. SET X 30mm LONG	1	Z26-082S
25.	M12 HEX NUT	1	Z18-12
26.	8mm DIA SPRING WASHER	6	Z12-02-08

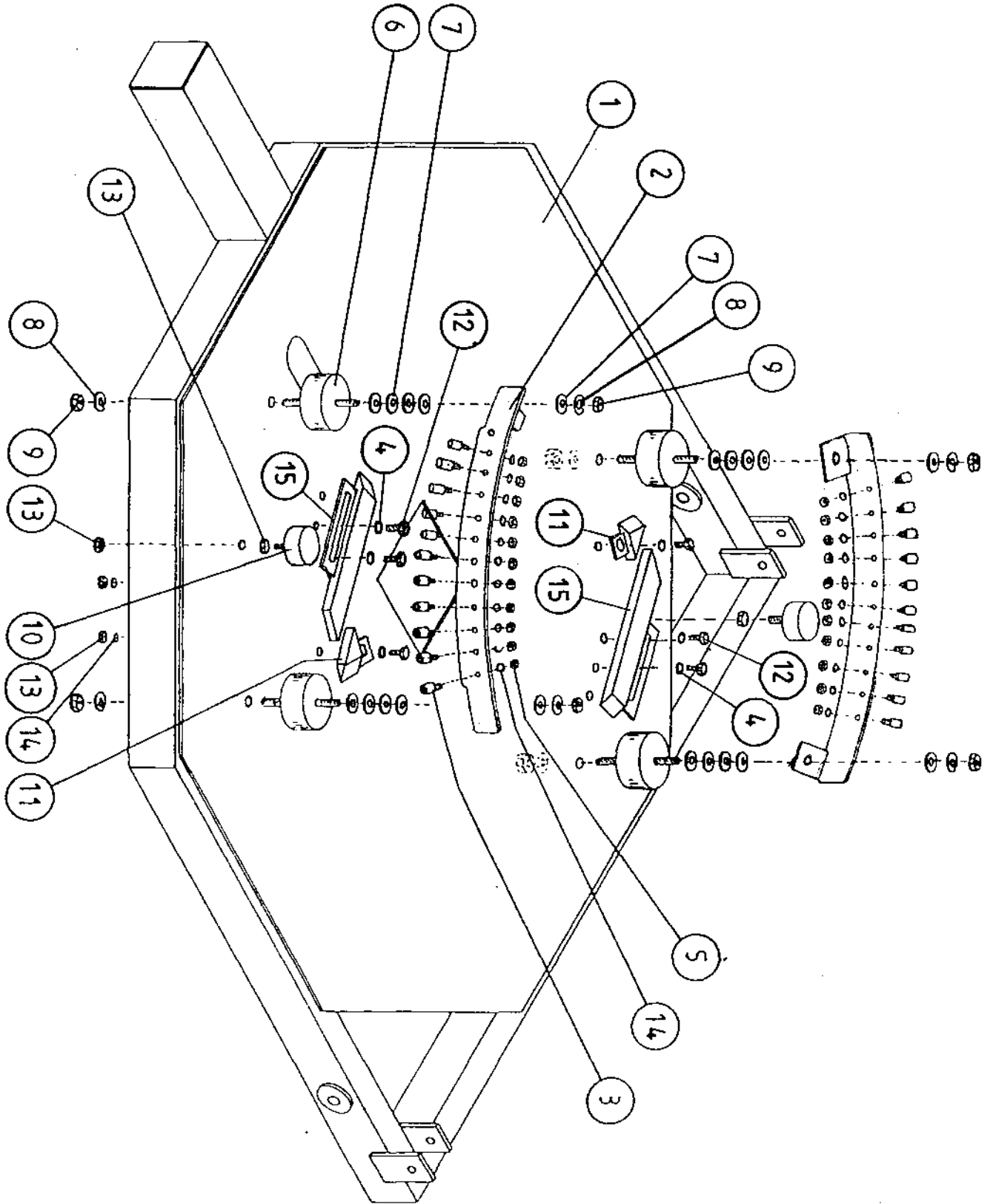
TANCO AUTOWRAP 1200 MODEL  
LIFT ARM HYDRAULIC COMPONENTS



TANCO AUTOWRAP 1200 MODELLIFT ARM HYDRAULIC COMPONENTSPARTS LIST

<u>ITEM NO.</u>	<u>DESCRIPTION</u>	<u>QTY.</u>	<u>PART NO.</u>
1.	5 BANK SPOOL VALVE (DIN) C/W LEVERS	1	Z01-03-018D5
2.	HYDRAULIC RAM D/A	1	Z01-01-140
3.	HYDRAULIC RAM D/A	1	Z01-01-140S
4.	HYDRAULIC PIPE (CHASSIS)	1	WD625-070
5.	HYDRAULIC PIPE (CHASSIS)	1	WD625-071
6.	HYDRAULIC PIPE (CHASSIS)	1	WD625-072
7.	HYDRAULIC PIPE (CHASSIS)	1	WD625-073
8.	HYDRAULIC PIPE (LIFT ARM)	1	WD625-065
9.	HYDRAULIC PIPE (LIFT ARM)	1	WD625-066
10.	HYDRAULIC PIPE (LIFT ARM)	1	WD625-067
11.	HYDRAULIC PIPE (LIFT ARM)	1	WD625-068
12.	PIPE CLAMP TOP/BOTTOM (DOUBLE)	12	Z01-24-26
13.	TOP CLAMPING PLATE	12	Z01-24-28
14.	M8 HEX HD BOLT x 35mm LONG	12	Z26-042B
15.	40" ST/90° 3/8" D/W HOSE	4	Z38-R2-40-S9
16.	24" ST/90° 3/8" D/W HOSE	8	Z38-R2-24-S9
17.	3/8" x 3/8" ADAPTOR	4	Z01-06-06-06
18.	3/8" FEMALE Q/R COUPLING	4	Z01-15-062
19.	3/8" MALE Q/R COUPLING	4	Z01-15-061
20.	3/8" DOWTY WASHER	4	Z01-04-02
21.	1/2" DOWTY WASHER	4	Z01-04-03
22.	1/2" x 3/8" ADAPTOR	4	Z01-06-06-08

# TANCO AUTOWRAP 1992 INDEXING QUADRANT ASSY (50% OVERLAP WITH 750mm WIDE FILM ROLL)





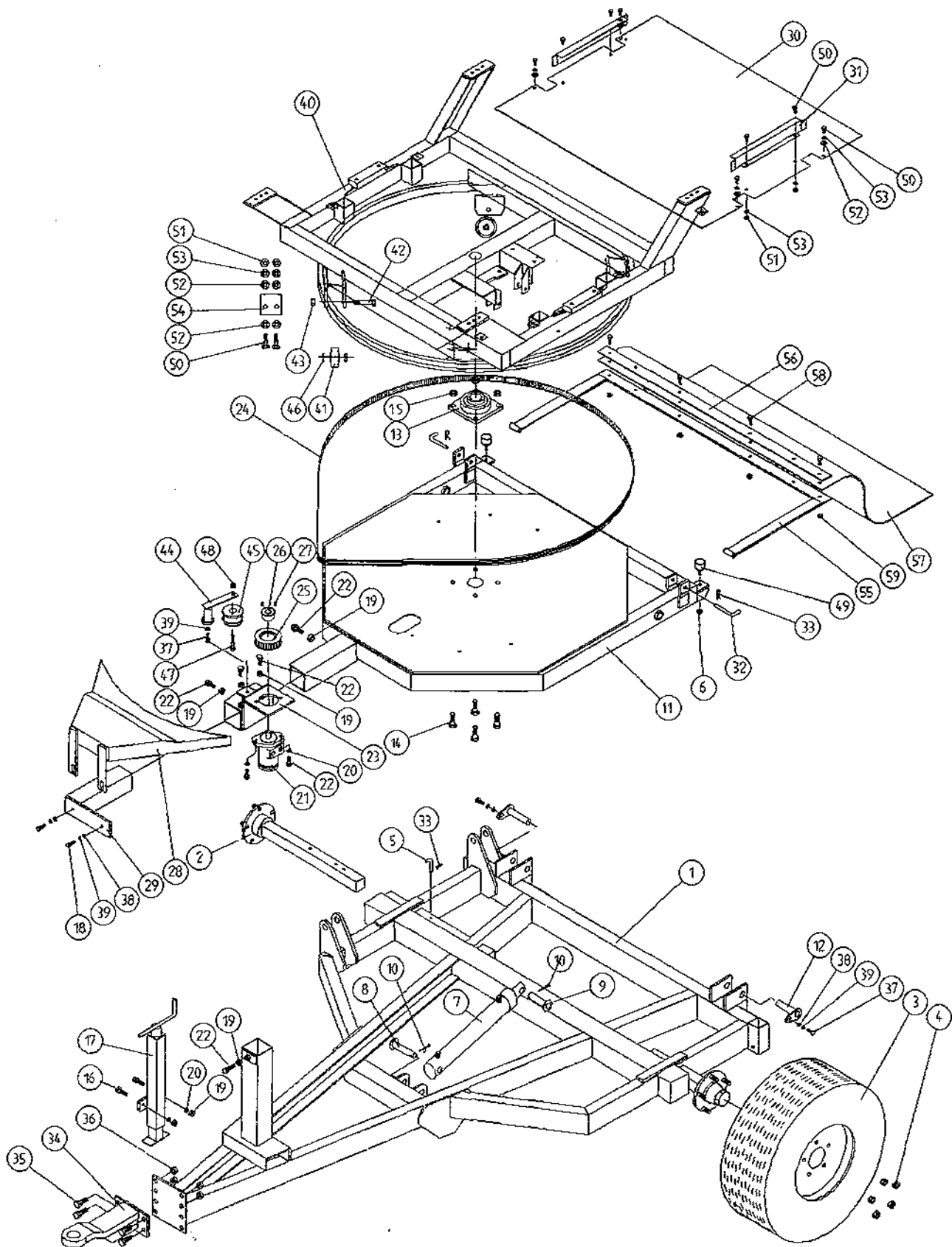
TANCO AUTOWRAP 1992

PARTS LIST

INDEXING QUADRANT ASSEMBLY (50% OVERLAP WITH 750MM WIDE FILM ROLL)

<u>ITEM NO.</u>	<u>DESCRIPTION</u>	<u>QTY.</u>	<u>PART NO</u>
1.	TIPPING FRAME ASSY.	1	WD60-TF
2.	QUADRANT ASSY.	1	WD60-QA
3.	3/4" DIA CAM FOLLOWER (HEAVY DUTY) C/W GREASE NIPPLE	22	Z06-425
4.	10mm DIA FLAT WASHERS	6	Z11-02-10
5.	3/8" UNF LOCKNUTS (BINX)	22	Z20-12
6.	RUBBER BUFFER 100mm DIA x 40mm LONG	4	Z40-22
7.	16mm DIA FLAT WASHERS	20	Z10-02-16
8.	16mm DIA SPRING WASHERS	8	Z12-02-16
9.	M16 HEX NUT	8	Z18-16
10.	RUBBER BUFFER 50mm DIA x 25mm LONG	2	Z40-23
11.	CAM ASSY (SHORT)	2	WD623-CAS
12.	M10 HEX HD SET x 30mm LONG	6	Z26-062S
13.	M10 HEX NUT	8	Z18-10
14.	10mm DIA SPRING WASHER	26	Z12-02-10
15.	CAM ASSY (LONG)	2	WD623-CAL

# TANCO AUTOWRAP 1200 MODEL



WD625 - PL5

## TANCO AUTOWRAP 1200 MODEL

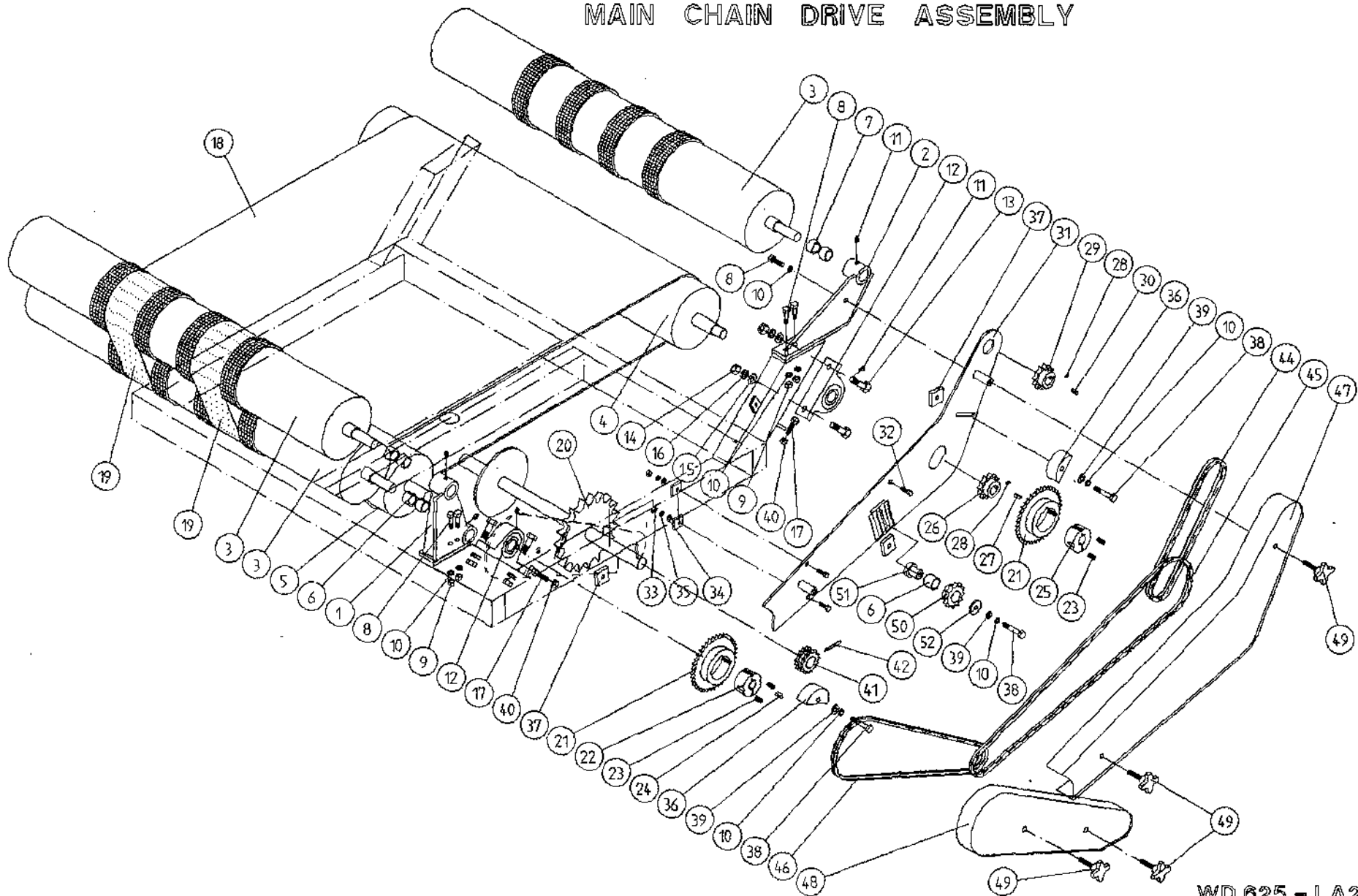
## PARTS LIST

ITEM NO.	DESCRIPTION	QTY	PART NO.
1.	CHASSIS ASSY	1	WD60-CHA
2.	STUB AXLE (ADJUSTABLE)	1	Z04-033
3.	WHEELS	2	Z04-031
4.	WHEEL NUTS	10	Z04-033I
5.	BISSEL PIN	1	Z03-22-AW82
6.	M10 HEX NUT		Z18-10
7.	HYD. RAM	1	Z01-01-AR687
8.	RAM BOTTOM PIVOT PIN	1	Z03-02-330
9.	RAM TOP PIVOT PIN	1	Z03-03-50
10.	2" x 1/4" SPLIT PIN	2	Z03-21-29
11.	TIPPING FRAME ASSY	1	WD60-TF
12.	TIPPING FRAME PIVOT PIN C/W GREASE NIPPLE	2	Z03-01-905 Z39-60
13.	2" DIA FLANGE BEARING	1	Z06-49
14.	5/8" UNF HEX HD. SET x 2" LONG	4	Z30B-064
15.	5/8" UNF LOCKNUT	4	Z20-10
16.	M12 HEX HD. SET x 40mm LONG		Z26S-084
17.	SCREW JACK ASSY	1	WD60-JA
18.	M10 HEX HD. SET x 30mm LONG		Z26-0623
19.	M12 HEX NUT		Z18-12
20.	12mm DIA SPRING WASHER		Z12-02-12
21.	HYD. MOTOR C.L.	1	Z01-02-ARTS
22.	M12 HEX HD. SETS x 30mm LONG	7	Z26-082S
23.	HYD. MOTOR MOUNTING ASSY	1	WD60-MMB
24.	170" LONG x 1/2" PITCH x 1" WIDE TOOTHED BELT	1	Z05-02-AW20
25.	4" DIA x 1/2" PITCH TOOTH PULLY	1	Z09-005-AW1
26.	TAPER LOCK BUSH TO SUIT 1" DIA SHAFT	1	Z09-005-AW2
27.	M10 STUDS x 15mm	2	Z28-01
28.	HYD. MOTOR GUARD ASSY.	1	WD60-MMG
29.	HYD. MOTOR GUARD MOUNTING BRACKET	1	WD60-MAMG
30.	TURN TABLE COVER PLATE	1	WD6Z5-109
31.	BELT GUIDE ASSY.	2	WD625-BQ
32.	BISSEL PIN	2	Z03-22-AW100
33.	4mm "R" CLIP	3	Z36-02
34.	HITCH ASSY	1	WD60-MIT
35.	M16 HEX HD, SET x 45mm LONG	4	Z26-123S
36.	M16 LOCKNUTS	4	Z23-16
37.	M10 HEX HD. SET x 25mm LONG (TUFLOCK)	3	Z26S-061
38.	10mm DIA MACHINED FLAT WASHER	4	Z11-02-10
39.	10mm DIA SPRING WASHER	4	Z12-02-10
40.	TURNTABLE ASSY	1	WD65-TA
41.	SUPPORT WHEELS (4" DIA)	4	Z06-466
42.	AXLE ASSY. C/W GREASE NIPPLE	4	Z03-22-AW/AX Z39-60
43.	M20 LOCKNUTS	4	Z23-20
44.	ROSTA TENSIONING UNIT ARM	1	Z06-454
45.	STEPPED ROLLER C/W BEARINGS	1	Z06-456
46.	SPACER	1	Z18-12
47.	M10 HEX HD. BOLT x 60mm LONG	1	Z26-0673

ITEM NO.	DESCRIPTION	QTY	PART NO.
48.	M10 LOCKNUT	1	Z23-10
49.	BUFFER 50mm DIA x 40mm LONG	2	Z40-20
50.	M8 HEX HD. SET x 20mm LONG	8	Z26-039S
51.	M8 HEX NUT	4	Z18-08
52.	8mm DIA FLAT WASHER (MUD FLAP)	4	Z11-02-081
53.	8mm DIA SPRING WASHER	8	Z12-02-08
54.	SCRAPER	2	WD60-70S
55.	RUBBER MAT MOUNTING ASSY.	1	WD63-RMM
56.	CLAMPING PLATE	1	WD63-1300
57.	BALE MAT	1	Z05-02AW
58.	M8 HEX HD SET x 25mm LONG	4	Z26-040S
59.	M8 LOCKNUTS	4	Z23-08



TANCO AUTOWRAP 1200 MODEL  
MAIN CHAIN DRIVE ASSEMBLY



WD 625 - LA2

TANCO AUTOWRAP 1200 MODEL

WD625-LA2

MAIN CHAIN DRIVE ASSY

PARTS LIST

<u>ITEM NO.</u>	<u>DESCRIPTION</u>	<u>QTY.</u>	<u>PART NO.</u>
1.	ROLLER MOUNTING BRACKET	1	WD623-RM3
2.	ROLLER MOUNTING BRACKET	1	WD625-RM5
3.	TOP ROLLER ASSY.	3	WD625-TRA
4.	DRIVE ROLLER ASSEMBLY SHORT	1	WD625-RSA
5.	DRIVE ROLLER ASSEMBLY LONG	1	WD625-RLA
6.	OILITE BUSH 1 1/4" O.D. x 1" I.D. x 1" LONG	5	Z06-10
7.	OILITE BUSH 1 1/4" O.D. x 1" I.D. x 3/4" LONG	2	Z06-105
8.	M10 HEX HD SETS x 35mm LONG	5	Z26-063S
9.	M10 HEX NUT	4	Z18-10
10.	10mm DIA SPRING WASHER	8	Z12-02-10
11.	1/8" BSP ST/GREASE NIPPLE		Z39-60
12.	1 1/4" PILLOW BLOCK BEARING	2	Z06-485
13.	M14 HEX HD BOLT x 50mm LONG	4	Z26-1048
14.	M14 HEX NUT	4	Z18-14
15.	14mm DIA MACHINED FLAT WASHER	4	Z11-02-14
16.	14mm SPRING WASHER	4	Z12-02-14
17.	M12 HEX HD SET x 60mm LONG	2	Z26-088S
18.	BALE BELT	1	Z05-02AWV1
19.	BALE LIFT BELT	2	Z05-02-AW3
20.	SPROCKET SHAFT ASSY	1	WD625-SPR
21.	38 TOOTH x 1/2" PITCH SIMPLEX SPROCKET TO SUIT 08B-1 CHAIN	2	Z06-AW3
22.	TAPER LOCK BUSH 2012 x 1 1/4" I.D.	1	Z06-AW22
23.	SOCKET SCREWS	4	Z99
24.	KEY 5/16" x 5/16" x 32mm LONG	1	WD623-K32
25.	TAPPER LOCK BUSH 2012 x 1" I.D.	1	Z06-AW21
26.	12 TOOTH x 5/8" PITCH SIMPLEX SPROCKET TO SUIT 10B-1 CHAIN	1	Z06-D623-323
27.	KEY 1/4" x 1/4" x 52mm LONG	1	WD623-K52
28.	M6 GRUB SCREW		Z28-006
29.	12 TOOTH x 5/8" PITCH SIMPLEX SPROCKET TO SUIT 10B-1 CHAIN	1	Z06-D623-310





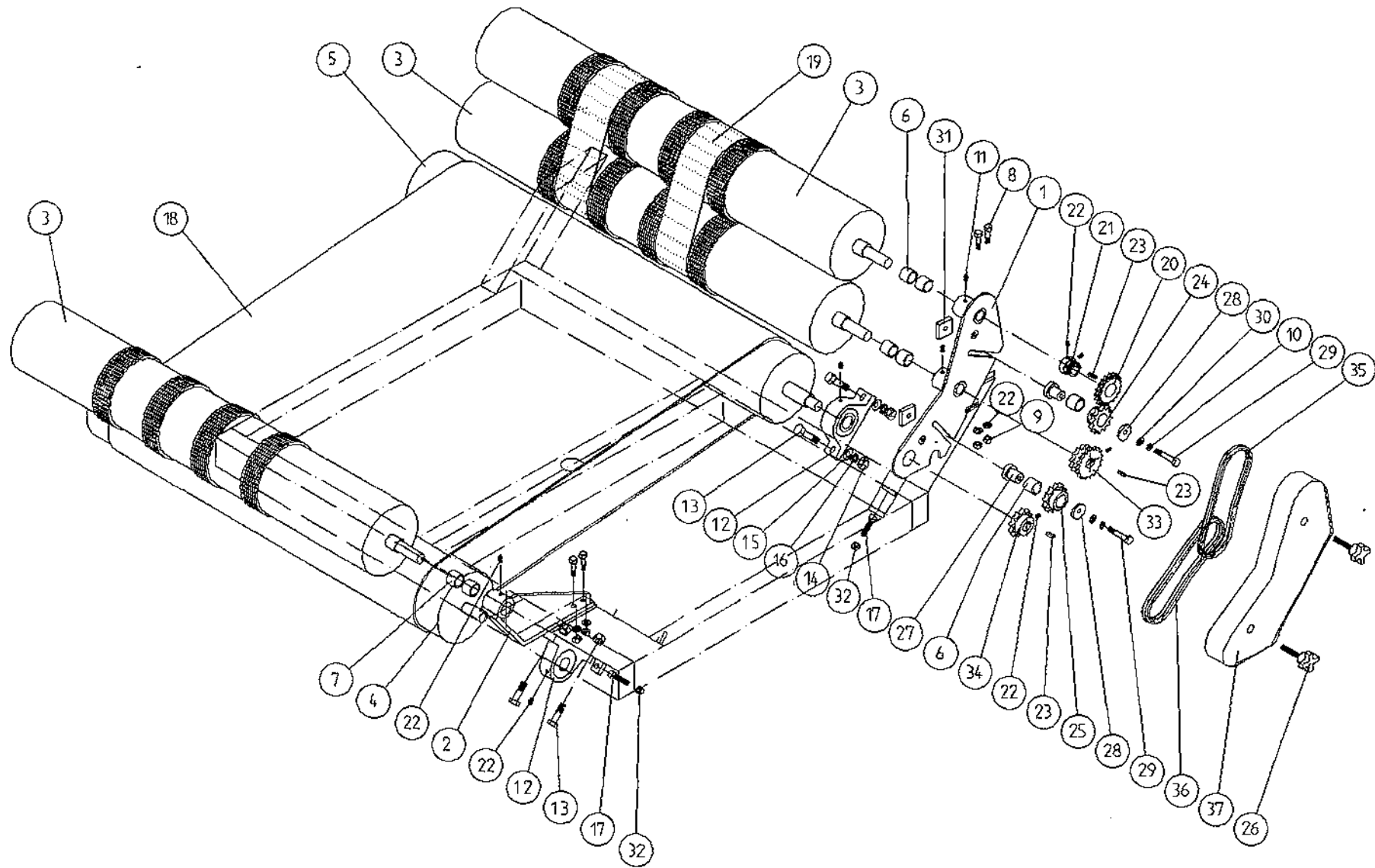
TANCO AUTOWRAP 1200 MODEL

MAIN CHAIN DRIVE ASSY

PARTS LIST

<u>ITEM NO.</u>	<u>DESCRIPTION</u>	<u>QTY.</u>	<u>PART NO.</u>
30.	KEY 1/4" x 1/4" x 25mm LONG	1	WD623-K25
31.	CHAIN GUARD BACK PLATE ASSY.	1	WD625-CBP
32.	M8 HEX HD SET x 30mm LONG	3	Z26-041S
33.	M8 HEX NUT	3	Z18-08
34.	8mm DIA FLAT WASHER	3	Z11-02-08
35.	8mm DIA SPRING WASHER	3	Z12-02-08
36.	CHAIN TENSIONER	2	WD60-776
37.	LOCKING PLATE	3	WD60-060
38.	M10 HEX HD BOLT x 60mm LONG	3	Z26-067B
39.	10mm DIA FLAT WASHER	3	Z11-02-10
40.	M12 HEX NUT	2	Z18-12
41.	DOUBLE SIMPLEX SPROCKET	1	Z06-D623-322
42.	5/16" DIA TENSION PIN x 45mm LONG	1	Z03-20-022
43.	3/16" DIA TENSION PIN x 45mm LONG	1	Z03-21-15
44.	CHAIN 10B-1 (5/8" PITCH SIMPLEX) x 56 PITCHES (INCL. JOINER)	1	Z09-06-10-56
45.	CHAIN 08B-1 (1/2" PITCH SIMPLEX) x 139 PITCHES (INCL 1/2 LINK & JOINER)	1	Z09-06-08-139
46.	CHAIN 08B-1 (1/2" PITCH SIMPLEX) x 105 PITCHES (INCL 1/2 LINK & JOINER)	1	Z09-06-08-105
47.	CHAIN GUARD	1	WD625-CGL
48.	CHAIN GUARD	1	WD625-CGM
49.	BLACK KNOB 1262-M M10 x 50	4	Z49-96
50.	15 TOOTH x 1/2" PITCH SIMPLEX SPROCKET TO SUIT 08B-1 CHAIN	1	Z06-D623-324
51.	SPROCKET SLEEVE	1	WD623-072
52.	RETAINING COLLAR	1	WD623-071

TANCO AUTOWRAP 1200 MODEL  
SECONDARY CHAIN DRIVE ASSEMBLY



WD 625 - LA1

TANCO AUTOWRAP 1200 MODEL

WD625-LA1

SECONDARY CHAIN DRIVE ASSY

PARTS LIST

<u>ITEM NO.</u>	<u>DESCRIPTION</u>	<u>QTY.</u>	<u>PART NO.</u>
1.	ROLLER MOUNTING BRACKET	1	WD623-RM4
2.	ROLLER MOUNTING BRACKET	1	WD625-RM6
3.	TOP ROLLER ASSY.	3	WD625-TRA
4.	DRIVE ROLLER ASSEMBLY (SHORT)	1	WD625-RSA
5.	DRIVE ROLLER ASSEMBLY (LONG)	1	WD625-RLA
6.	OILITE BUSH (1 1/4" O.D. x 1" I.D. x 1" LONG)	6	Z06-10
7.	OILITE BUSH (1 1/4" O.D. x 1" I.D. x 3/4" LONG)	2	Z06-105
8.	M10 HEX HD SETS x 35mm LONG	4	Z26-063S
9.	M10 HEX NUT	4	Z18-10
10.	10mm DIA SPRING WASHER	6	Z12-02-10
11.	1/8" BSP ST/GREASE NIPPLE		Z39-60
12.	1 1/4" PILLOW BLOCK BEARING	2	Z06-485
13.	M14 HEX HD BOLT x 50mm LONG	4	Z26-1048
14.	M14 HEX NUT	4	Z18-14
15.	14mm DIA MACHINED FLAT WASHER	4	Z11-02-14
16.	14mm DIA SPRING WASHER	4	Z12-02-14
17.	M12 HEX HD SET x 60mm LONG	2	Z26-088S
18.	BALE BELT	1	Z05-02AWV1
19.	BALE LIFT BELT	2	Z05-02-AW3
20.	A08B1-19 INDUSTRIAL RATCHET FREEWHELL TO SUIT 08B-1 CHAIN	1	Z0G-90
21.	A211 ADAPTOR 1" I.D.	1	Z0G-901
22.	M6 GRUB SCREW		
23.	KEY 1/4" x 1/4" x 25mm LONG	3	WD623-K25
24.	15 TOOTH x 1/2" PITCH SIMPLEX SPROCKET TO SUIT 08B-1 CHAIN	1	Z06-0623-324
25.	12 TOOTH x 5/8" PITCH SIMPLEX SPROCKET TO SUIT 10B-1 CHAIN	1	Z06-0623-309
26.	BLACK KNOB 1262 M M10 x 50	2	Z49-12
27.	SPROCKET SLEEVE	2	WD623-072
28.	RETAINING COLLAR	2	WD623-071
29.	M10 HEX HD BOLT x 60mm LONG	2	Z26-067B

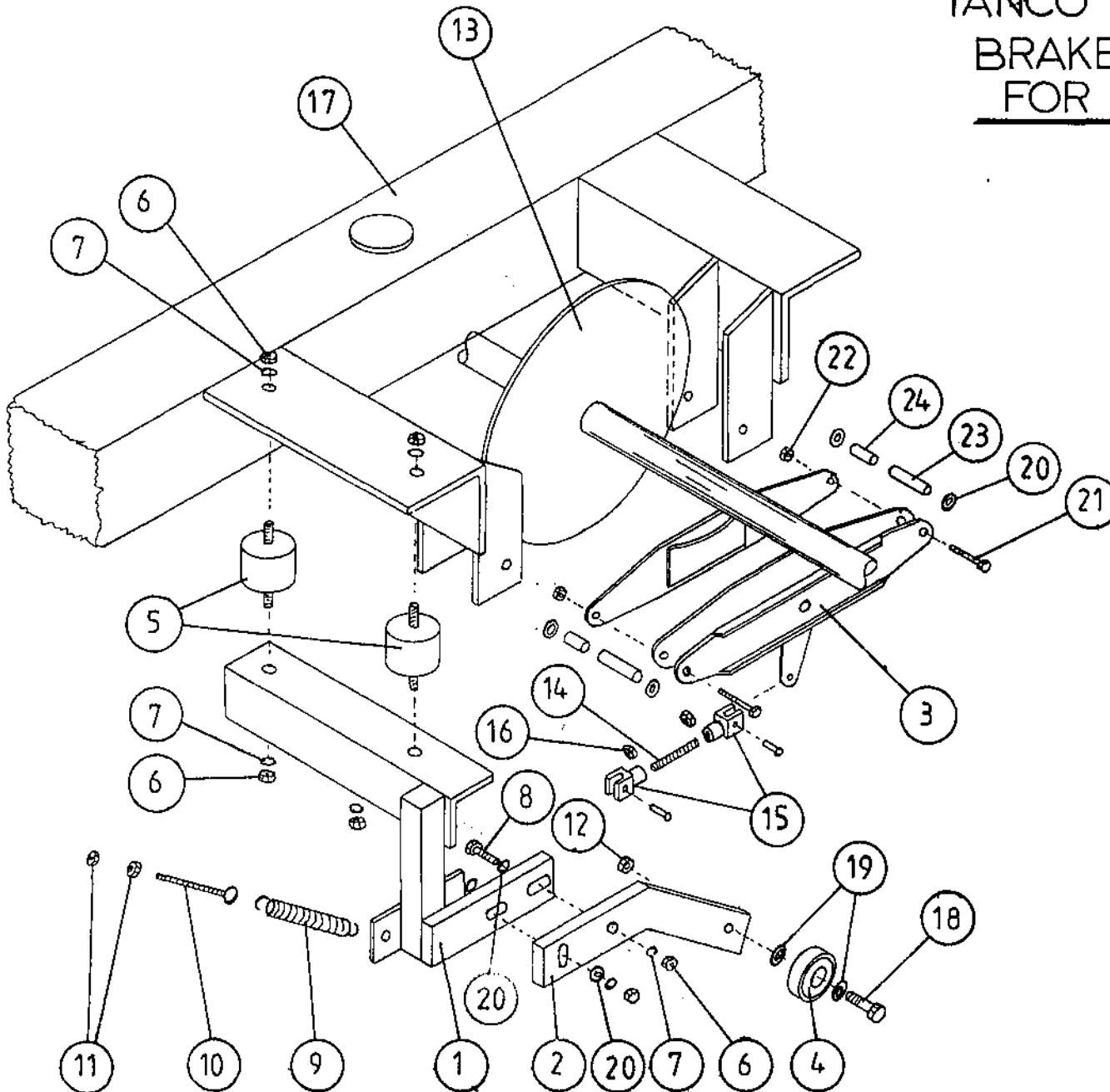
TANCO AUTOWRAP 1200 MODEL

SECONDARY CHAIN DRIVE ASSY

PARTS LIST

<u>ITEM NO.</u>	<u>DESCRIPTION</u>	<u>QTY.</u>	<u>PART NO.</u>
30.	10mm DIA FLAT WASHER	2	Z11-02-10
31.	LOCKING PLATE	2	WD60-060
32.	M12 HEX NUT		Z18-12
33.	DOUBLE SIMPLEX SPROCKET	1	Z06-D623-321
34.	12 TOOTH x 5/8" PITCH SIMPLEX SPROCKET TO SUIT 10B-1 CHAIN	1	Z06-D623-310
35.	CHAIN 08B-1 (1/2" PITCH SIMPLEX) x 48 PITCHES (INCL. JOINER)	1	Z09-06-08-48
36.	CHAIN 10B-1 (5/8" PITCH SIMPLEX) x 38 PITCHES (INCL. JOINER)	1	Z09-06-10-38
37.	CHAIN GUARD	1	WD625-GGS

TANCO AUTOWRAP 1992  
BRAKE ARRANGEMENT  
FOR INDEXING SHAFT

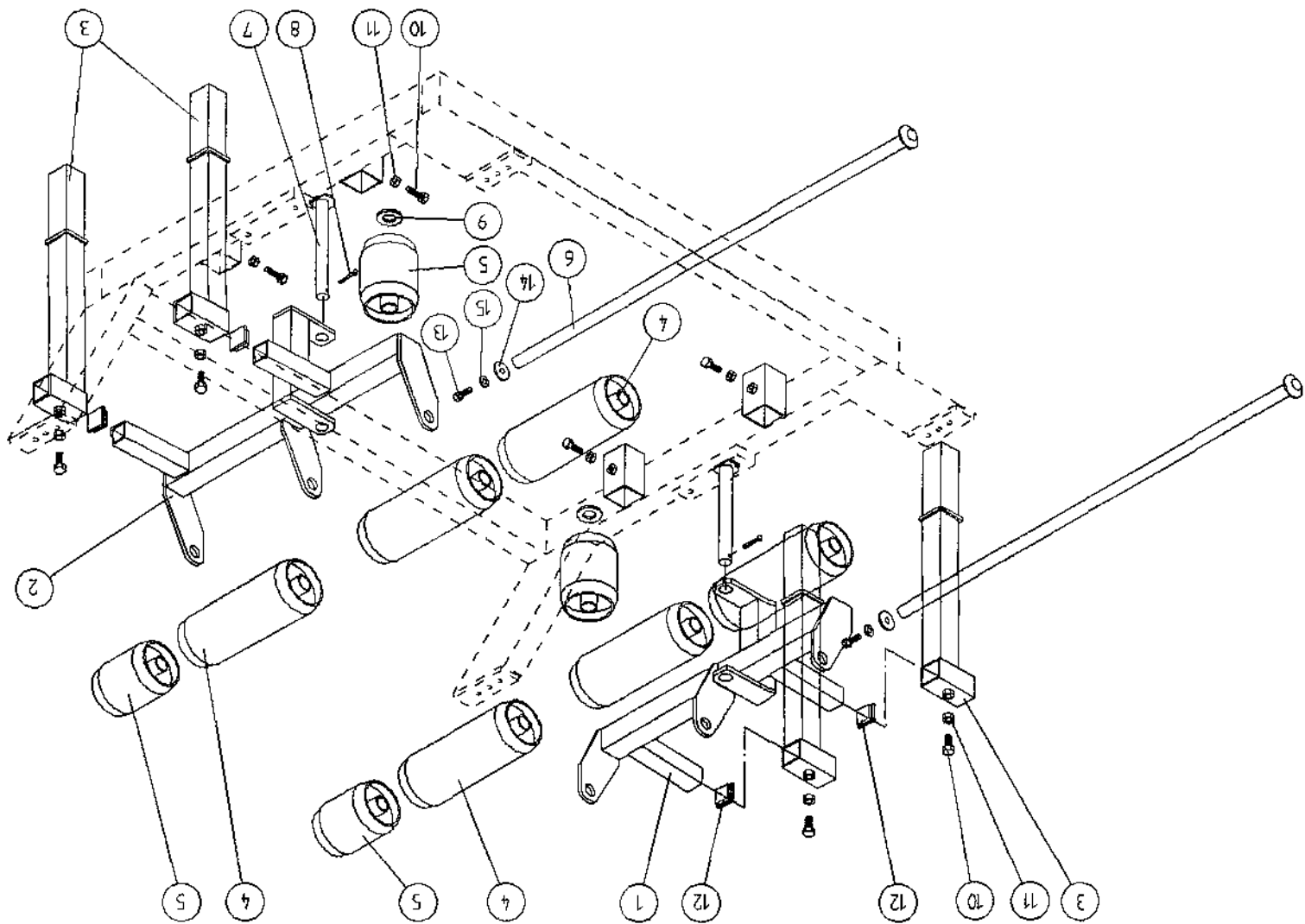


TANCO AUTOWRAP 1992

BRAKE ARRANGEMENT FOR INDEXING SHAFT

PARTS LIST

<u>ITEM NO.</u>	<u>DESCRIPTION</u>	<u>QTY.</u>	<u>PART NO.</u>
1.	CAM FOLLOWER MOUNTING BRACKET (UPPER)	1	WD60-CFMB
2.	CAM FOLLOWER MOUNTING BRACKET (LOWER)	1	WD60-804
3.	CALIPER DISC BRAKE UNIT	1	Z49-92
4.	BALL BEARING (6301)	1	Z06-43
5.	RUBBER BUFFER 50mm DIA x 30 LONG TYPE A 57 SHORE	2	Z40-21
6.	M10 HEX NUTS	6	Z18-10
7.	10mm DIA SPRING WASHERS	6	Z12-02-10
8.	M10 HEX HD SET x 40 LONG	2	Z26-064S
9.	TENSION SPRING	1	Z07-05
10.	EYE BOLT (M8)	1	WD60-EB
11.	M8 HEX NUTS	2	Z18-08
12.	M12 LOCKNUT	1	Z23-12
13.	SPROCKET/SHAFT ASSY	1	WD625-SPR
14.	5/16" UNF THREADED BAR x 90mm LONG	1	WD60-806
15.	5/16" UNF CLEVIS C/W PIN & CLIP	2	Z49-33
16.	5/16" UNF HEX NUT	2	Z15-05
17.	TURN TABLE	1	WD60-TT
18.	M12 HEX HD. SETS x 40mm LONG	1	Z26-0845
19.	12mm DIA FLAT WASHER	2	Z11-02-12
20.	10mm DIA FLAT WASHER	7	Z11-02-10
21.	3/8" UNF HEX HD. BOLT x 3" LONG	2	Z31B-102
22.	3/8" UNF LOCK NUT	2	Z15-06
23.	SPACER 1/2" O.D. x 13/32" I.D. x 1 1/2" LONG	2	
24.	SPACER 1/2" O.D. x 13/32" I.D. x 1/2" LONG	2	



TANCO AUTOWRAP 1200 MODEL  
END ROLLER MOUNTING BRACKET ASSEMBLY

TANCO AUTOWRAP 1200 MODEL

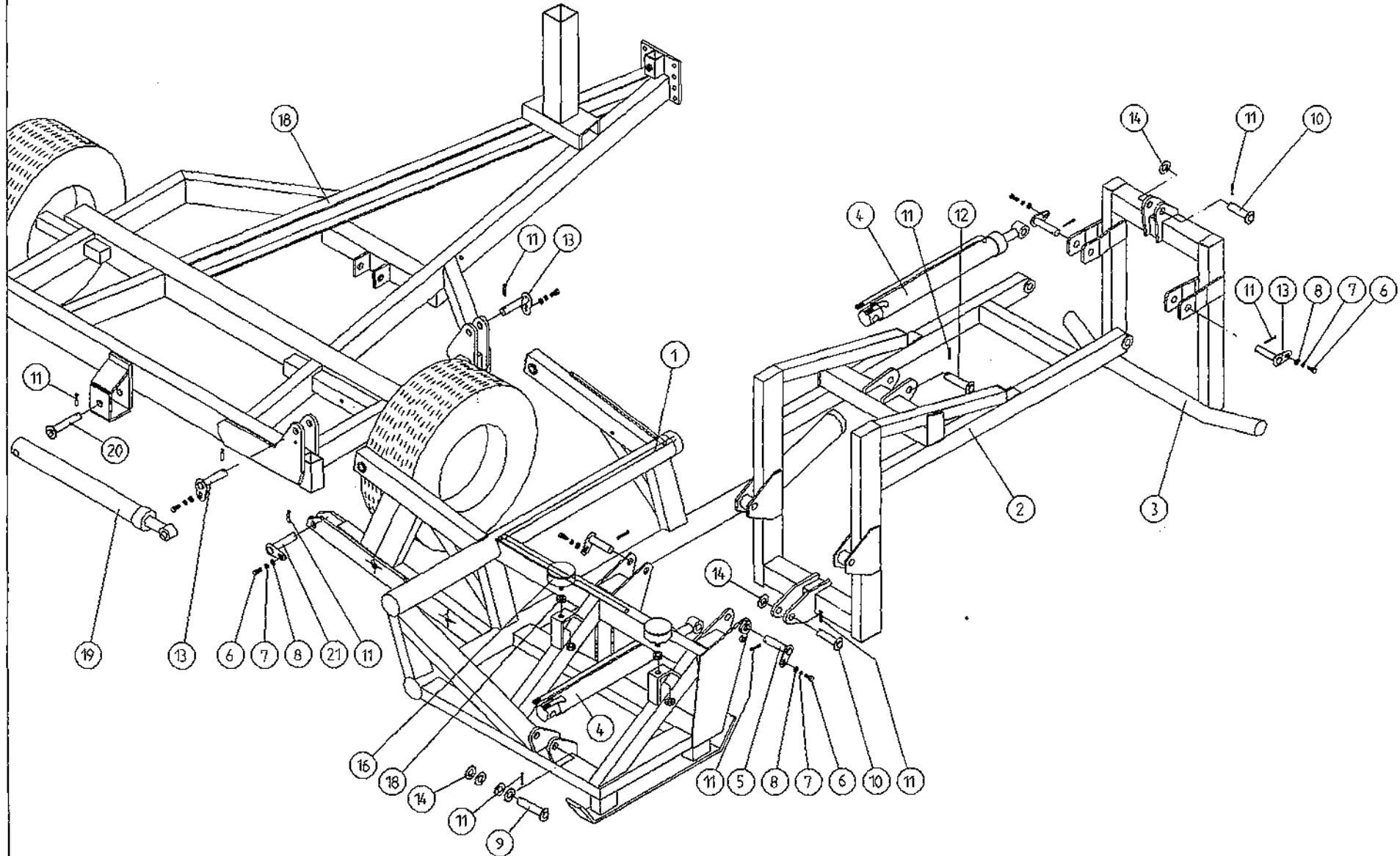
END ROLLER MOUNTING BRACKET ASSY.

PARTS LIST

<u>ITEM NO.</u>	<u>DESCRIPTION</u>	<u>QTY.</u>	<u>PART NO.</u>
1.	ROLLER MOUNTING BRACKET	1	WD625-ERM1
2.	ROLLER MOUNTING BRACKET	1	WD625-ERM2
3.	SOCKET ASSY.	4	WD625-ERSA
4.	ROLLER ASSY (LONG)	6	WD68-LRA
5.	ROLLER ASSY (SHORT)	4	WD625-ERAS
6.	ROLLER PIVOT PIN (LONG)	2	WD625-PL
7.	ROLLER PIVOT PIN (SHORT)	2	WD625-ERPS
8.	1/4" DIA SPLIT PIN x 1 1/2" LONG	2	Z03-21-27
9.	1" DIA HEAVY FLAT WASHER	6	Z10-02-25
10.	M12 HEX HD SET x 40mm LONG	8	Z26S-084
11.	M12 HEX NUT	8	Z18-12
12.	PLASTIC CAP	4	Z32-07
13.	M10 HEX HD SET x 25 LONG (TUFLOCK)	2	Z26-061S
14.	THRUST WASHER	2	WD623-071
15.	10mm DIA SPRING WASHER	2	Z12-02-10



TANCO AUTOWRAP 1200 MODEL  
LIFT ARM ASSEMBLY



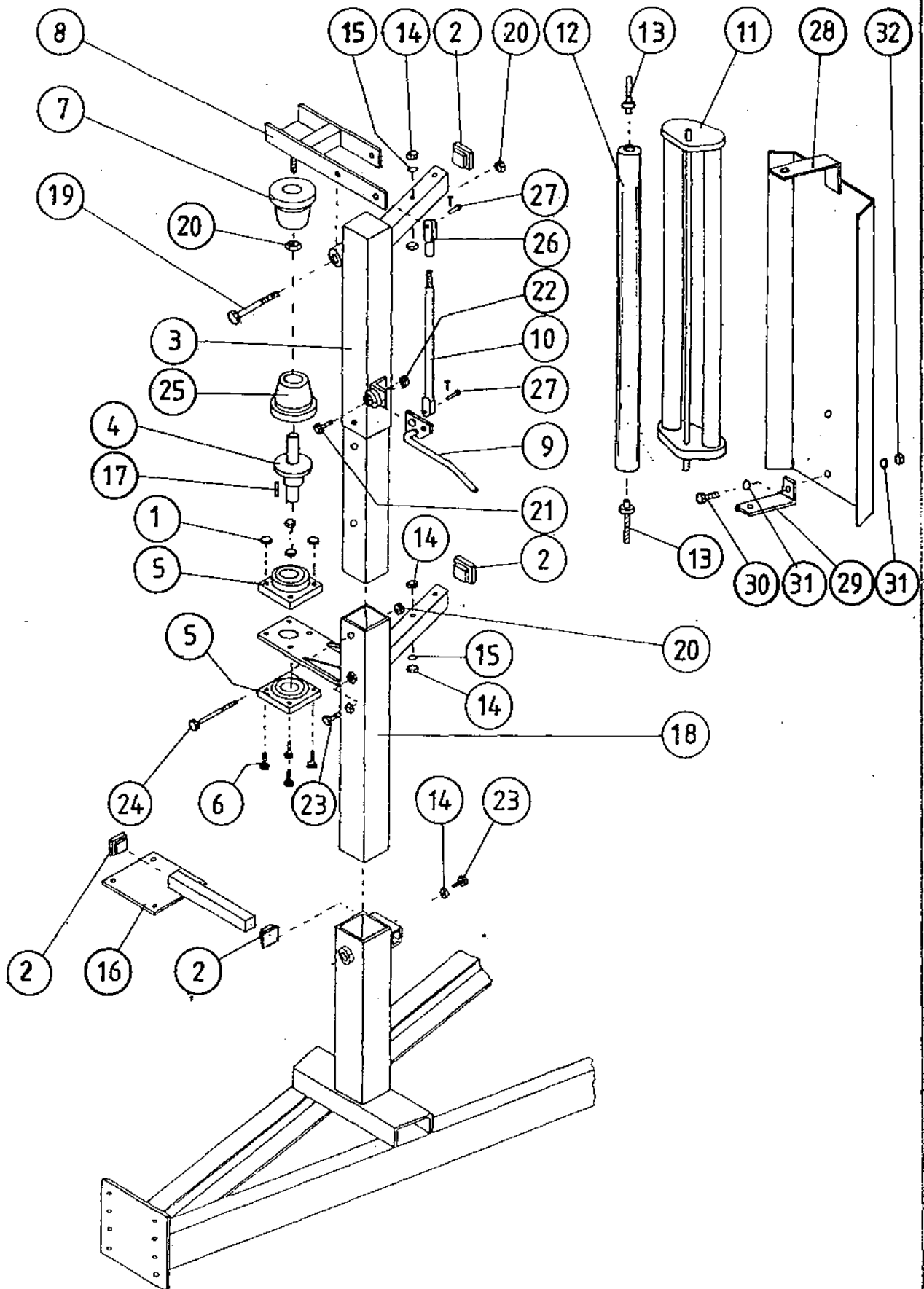
TANCO AUTOWRAP 1200 MODEL

LIFT ARM ASSEMBLY

PARTS LIST

<u>ITEM NO.</u>	<u>DESCRIPTION</u>	<u>QTY.</u>	<u>PART NO.</u>
1.	LIFT ARM ASSY	1	WD625-LA
2.	LIFT ARM - GRAB FRAME	1	WD625-LAGF
3.	LIFT ARM - GRAB SECTION	1	WD625-LAGS
4.	HYDRAULIC RAM D/A	1	Z01-01-140
5.	GRAB FRAME PIVOT PIN C/W GREASE NIPPLE	2	Z03-01-796
6.	M10 HEX HD. SET x 25mm LONG	7	Z26S-061
7.	10mm DIA SPRING WASHER	7	Z12-02-10
8.	10mm DIA FLAT WASHER	7	Z11-02-10
9.	MAIN FRAME BOTTOM RAM PIVOT PIN	1	Z03-02-54S
10.	MAIN FRAME AND GRAB TOP RAM PIVOT PIN	2	Z03-03-50
11.	1/4" DIA SPLIT PIN x 1 1/2" LONG	11	Z03-21-27
12.	GRAB BOTTOM RAM PIVOT PIN	1	Z03-02-218
13.	GRAB PIVOT & LIFT ARM PIVOT PIN C/W GREASE NIPPLE	4	Z03-01-905
14.	1" DIA HEAVY FLAT WASHER	6	Z10-02-25
15.	HYDRAULIC RAM D/A	1	Z01-01-140S
16.	RUBBER BUFFER	2	Z40-26
17.	M16 HEX NUT	4	Z18-16
18.	CHASSIS ASSY	1	WD60-CHA
19.	HYDRAULIC RAM (LIFT ARM)	1	Z01-01-AWQ1Z
20.	RAM BOTTOM PIVOT PIN	1	Z03-02-330
21.	RAM ROP PIVOT PIN	1	Z03-01-797

# TANCO AUTOWRAP 1992 FILM DISPENSING SYSTEM



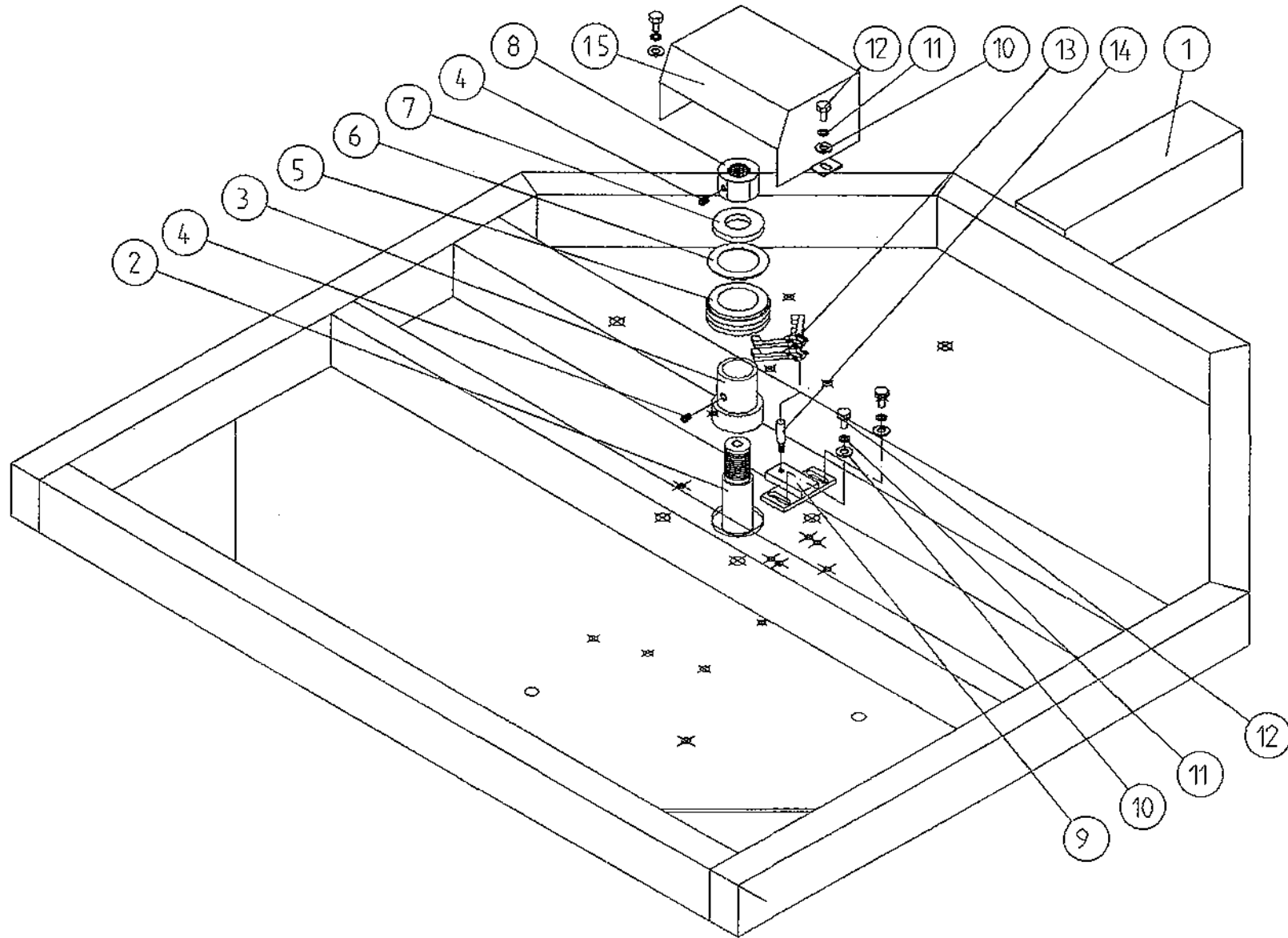
TANCO AUTOWRAP 1992

FILM DISPENSING SYSTEM

PARTS LIST

<u>ITEM NO.</u>	<u>DESCRIPTION</u>	<u>QTY.</u>	<u>PART NO.</u>
1.	M10 LOCKNUTS	4	Z23-10
2.	PLASTIC CAPS (TO SUIT 40 x 40 x 3 RHS)	4	Z32-07
3.	DISPENSER MOUNTING (UPPER)	1	WD60-DMUH
4.	FILM SPOOL ASSEMBLY	1	WD60-SPO
5.	1" DIA FLANGE BEARING	2	Z06-48
6.	M10 HEX HD. BOLT x 50mm LONG	4	Z26-066B
7.	CONE (TOP) 8 C/W BALL BEARINGS	1	Z06-45-01
8.	CLAMP ASSEMBLY	1	WD60-DMCA
9.	LEVER ASSEMBLY	1	WD60-DMLA
10.	LINK ASSEMBLY	1	WD60-DMLK
11.	FILM DISPENSER UNIT MK 8	1	D615
12.	SLAVE ROLLER ASSY (PLASTIC COATED)	1	WD625-SLR
13.	SLAVE ROLLER PIVOT	2	WD60-253
14.	M12 HEX NUTS	6	Z18-12
15.	12mm DIA SPRING WASHER	2	Z12-02-12
16.	SPOOL VALVE MOUNTING PLATE ASSEMBLY	1	WD60-SUMP
17.	1/4" DIA TENSION PIN x 3/4" LONG	1	Z03-20-062
18.	DISPENSER MOUNTING (LOWER)	1	WD60-DMLH
19.	M12 HEX HD BOLT x 130mm LONG	1	Z26-094B
20.	M12 LOCKNUT	3	Z23-12
21.	M8 HEX HD BOLT x 35mm LONG	1	Z26-042S
22.	M8 LOCKNUT	1	Z23-08
23.	M12 HEX HD SET x 30mm LONG	2	Z26-082S
24.	M12 HEX HD BOLT x 100mm LONG	1	Z26-092B
25.	CONE (BOTTOM)	1	Z06-45-02
26.	CLEVIS (M10)	1	Z49-336
27.	PIN (5/16" DIA) C/W CLIP	2	Z49-337

TANCO AUTOWRAP - CUT AND START UNIT (1992)  
SLIP RING ASSEMBLY



TANCO AUTOWRAP CUT AND START UNIT (1992)

SLIP RING ASSY.

PARTS LIST

<u>ITEM NO.</u>	<u>DESCRIPTION</u>	<u>QTY.</u>	<u>PART NO.</u>
1.	UNDERSIDE OF TIPPING FRAME	1	
2.	TURNTABLE SPINDLE	1	WD60-768
3.	SLIP RING MOUNTING SLEEVE	1	WD60-769
4.	M8 GRUB SCREW	2	Z28-006
5.	SLIP RING ASSY.	1	Z0605-308
6.	INSULATING RING	1	Z0605-350
7.	LOCKING COLLAR	1	WD60-715
8.	1 1/4" UNC HEX NUT	1	Z18-300
9.	SLIP RING MOUNTING BRACKET ASSY.	1	WD605-SMB
10.	10mm DIA FLAT WASHER 1" O.D.	4	Z11-02-101
11.	10mm SPRING WASHER	4	Z12-02-10
12.	M10 HEX HD SET x 20mm	4	Z26-060S
13.	BRUSHES	2	Z0605-306
14.	INSULATOR SLEEVE	1	Z0605-304
15.	SLIP RING GUARD ASSY	1	WD605-SRMG

TANCO AUTOWRAP CUT AND START  
SENSOR MOUNTING BRACKET  
MAGNET MOUNTING BRACKET.

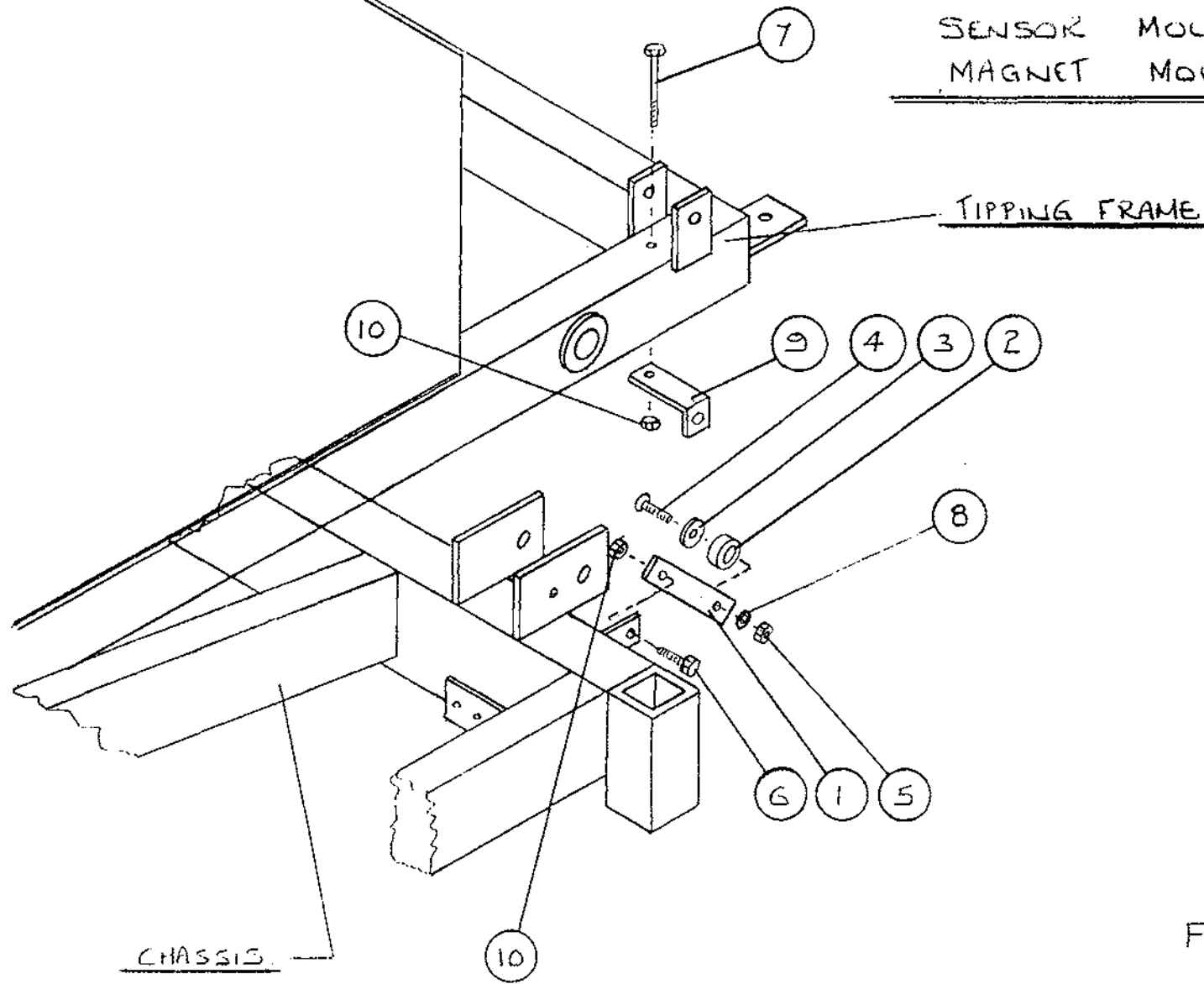


FIG. 6.

TANCO © 1989.

TANCO AUTOWRAP CUT AND START UNIT 1992

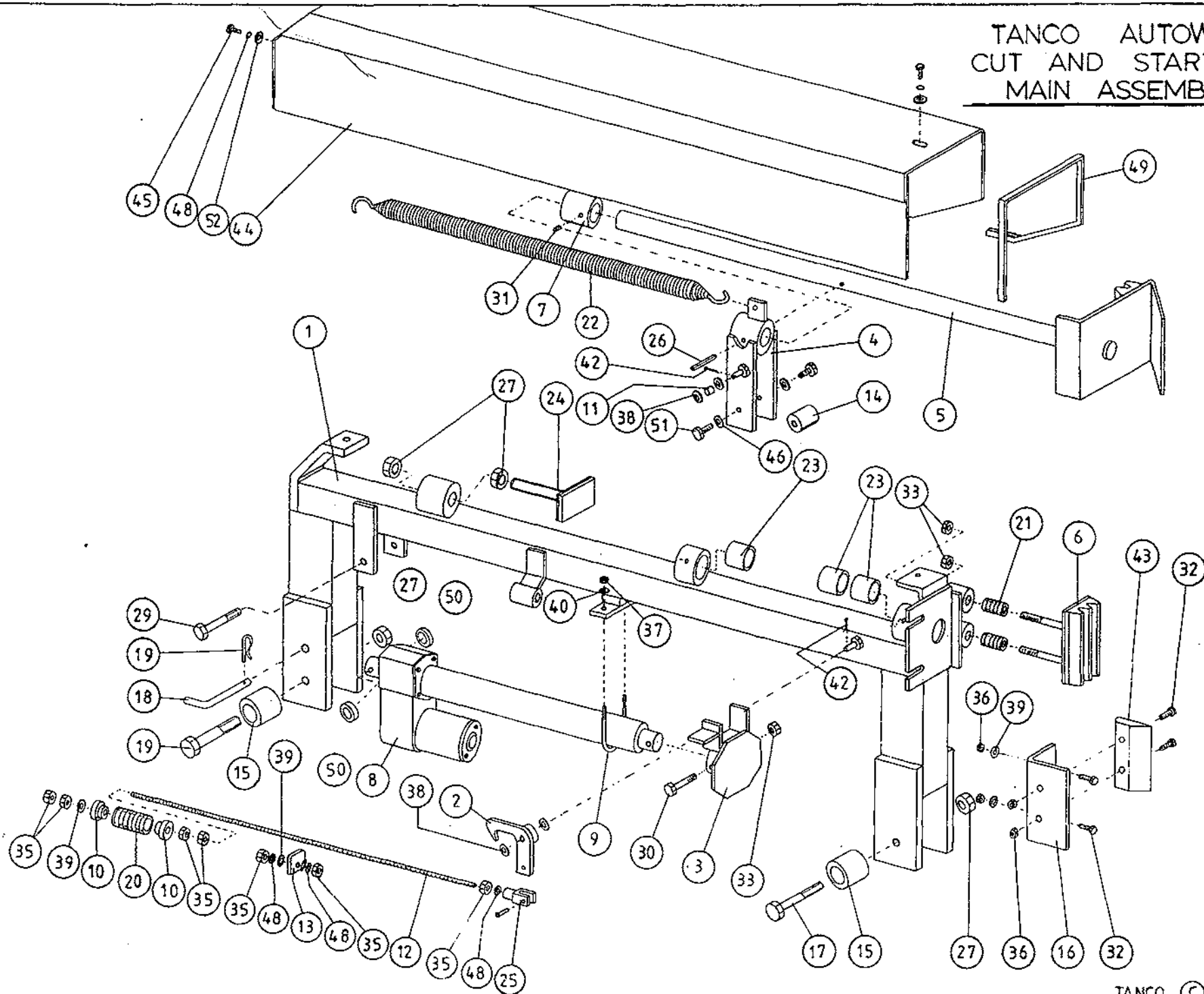
SENSOR AND MAGNET MOUNTING BRACKETS

PARTS LIST

<u>ITEM NO.</u>	<u>DESCRIPTION</u>	<u>QTY.</u>	<u>PART NO.</u>
1	MAGNET MOUNTING FLAT	1	WD605-57
2	MAGNET 35mm O.D. x 17mm I.D. x 8mm LONG	1	ZD605-200
3	8mm DIA FLAT WASHER 1" O.D.	1	Z11-02-081
4	M6 CS'K SET SCREW x 25mm	1	Z13-131
5	M8 LOCKNUT (NYLOCK)	1	Z23-06
6	M8 HEX HD SET x 20mm	1	Z26-020S
7	M6 HEX HD BOLT x 100	1	Z26-057B
8	6mm DIA FLAT WASHER	1	Z11-02-06
9	SENSOR MOUNTING BRACKET	1	WD605-58
10	M8 LOCKNUT (NYLOCK)	2	Z23-08



TANCO AUTOWRAP  
CUT AND START UNIT (1992)  
MAIN ASSEMBLY



TANCO AUTOWRAP CUT AND START UNIT (1992)

PARTS LIST

<u>ITEM NO.</u>	<u>DESCRIPTION</u>	<u>QTY.</u>	<u>PART NO.</u>
1.	MAIN MOUNTING FRAME ASSY.	1	WD605-MFA
2.	LATCH ASSY.	1	WD605-LA
3.	PUSH PLATE ASSY.	1	WD605-PP
4.	GUIDE ASSY.	1	WD605-GB
5.	PLUNGER ASSY.	1	WD605-PL
6.	FILM GRIPPER ASSY.	1	WD605-FG
7.	PLUNGER END CAP	1	WD605-90
8.	WARNER LINEAR ACTUATOR D11 10B5 08 NO CLUTCH 12V	1	Z0605-500
9.	"U" BOLT	1	WD605-45
10.	STEPPED COLLAR	2	WD605-46
11.	SLEEVE 1/2" DIA O.D. x 13/32" DIA I.D.	1	WD605-47
12.	THREADED ROUND 5/16" UNF	1	WD605-48
13.	TRIGGER	1	WD605-50
14.	COLLAR 1" DIA BRIGHT RD. x 41.5mm LONG	1	WD605-51
15.	SPACER	1	WD605-100
16.	BLADE GUARD/MOUNTING BRACKET	1	WD605-105
17.	M12 HEX HD BOLT x 80mm LONG	2	Z26-0901B
18.	BISSEL PIN	1	Z03-22-AW100
19.	4mm "R" CLIP	1	Z36-02
20.	SPRING 16mm O.D. x 1.5mm WIRE x 48mm LONG	1	Z07-34
21.	SPRING 1.09" O.D. x 0.092" WIRE x 1.54" LONG	2	Z07-44
22.	SPRING 1.125" O.D. x 0.125" WIRE x 330mm	1	Z07-46
23.	OILITE OIL RETAINING BUSH 1 1/8" O.D. x 3/4" I.D. x 1" L.	3	Z06-105
24.	RUBBER BUFFER ASSY.	1	WD605-RBA
25.	CLEVIS C/W PIN	1	Z49-33
26.	1 1/2" x 1/4" DIA TENSION PIN	1	Z03-20-07
27.	M16 HEX NUTS	2	Z18-16
28.	M12 LOCKNUTS	2	Z23-12
29.	M12 HEX HD BOLT x 65mm	1	Z26-0882B
30.	M12 HEX HD BOLT x 50mm	1	Z26-086B
31.	M8 GRUB SCREW	1	
32.	M8 HEX HD SET x 25mm	4	Z26-025S
33.	M12 BINX LOCKNUT	4	Z23-12BX

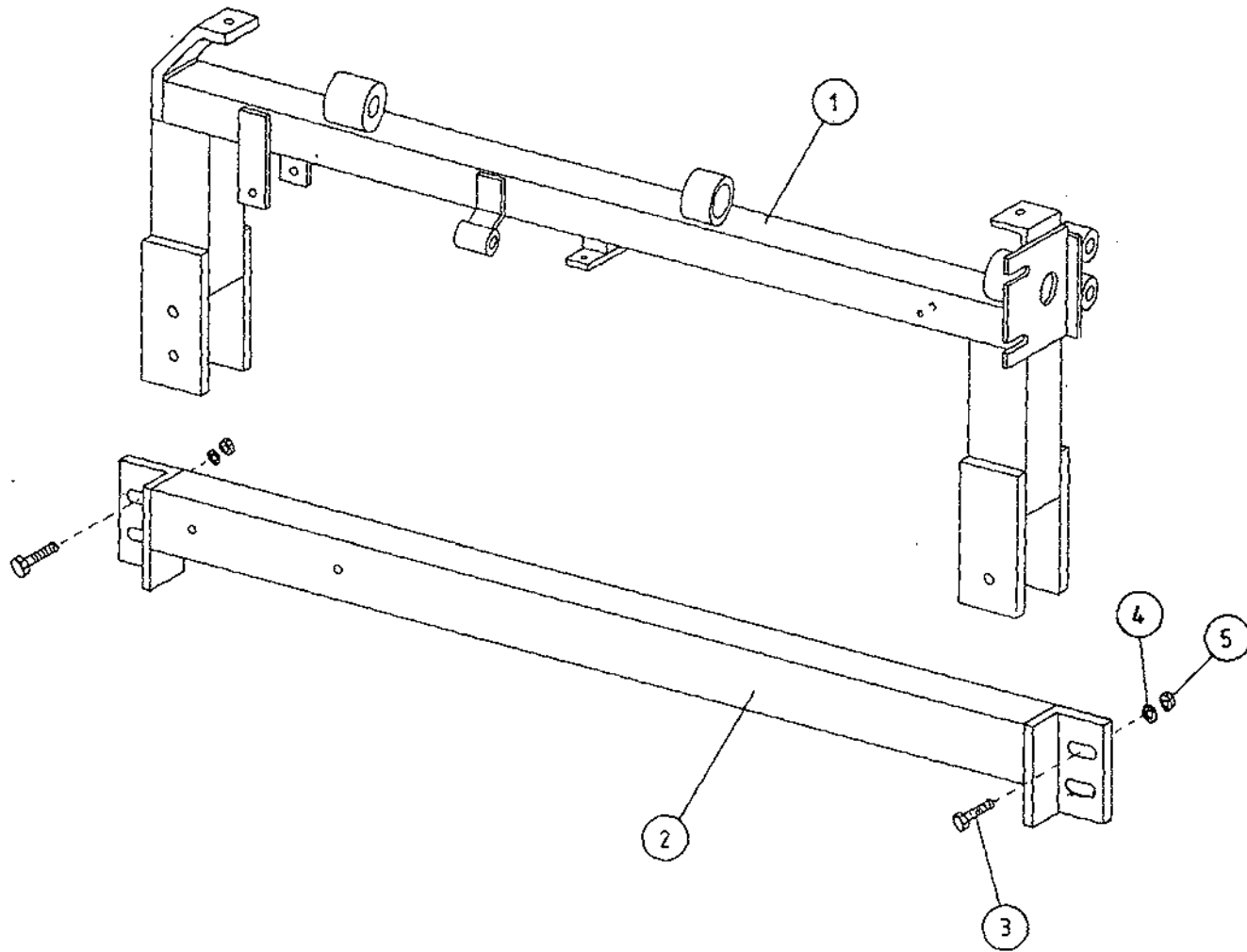


TANCO AUTOWRAP CUT AND START UNIT (1992)

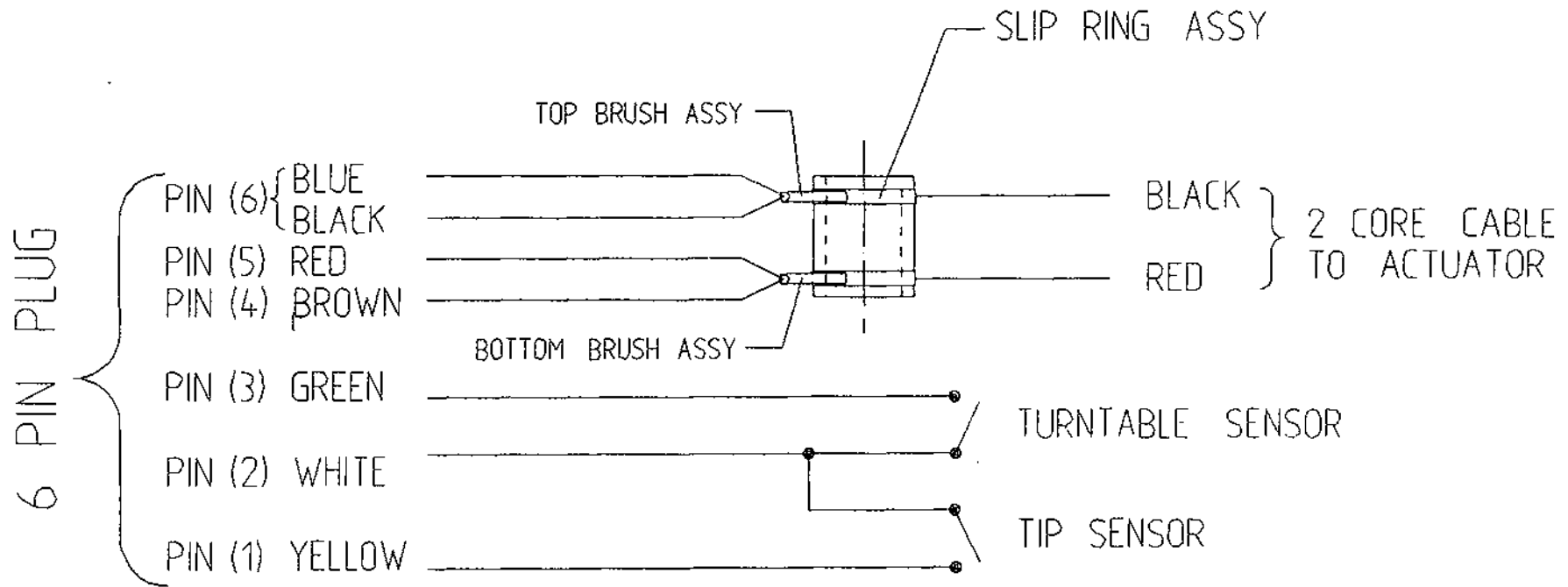
PARTS LIST

<u>ITEM NO.</u>	<u>DESCRIPTION</u>	<u>QTY.</u>	<u>PART NO.</u>
35.	5/16" UNF HEX NUT	7	Z15-05
36.	M8 LOCKNUT	6	Z18-08
37.	M6 LOCKNUT (NYLOCK)	2	Z23-16
38.	10mm DIA FLAT WASHER	10	Z11-02-10
39.	8mm DIA FLAT WASHER	5	Z11-02-08
40.	6mm DIA FLAT WASHER	2	Z11-02-06
42.	3mm DIA SPLIT PIN	2	Z03-21-02
43.	BLADE	1	Z44-34
44.	MAIN GUARD	1	WD605-MG
45.	M8 HEX HD SET x 20mm LONG	2	Z26-020S
46.	10mm DIA SPRING WASHER	2	Z12-02-10
47.			
48.	8mm DIA SPRING WASHER	9	Z12-02-08
49.	EDGING STRIP	1	Z44-12
50.	SPACER 1" O.D. x 1/2" I.D. x 6mm LONG	2	WD605-65
51.	M10 HEX HD SET x 20mm	2	Z26-060S
52.	8mm DIA FLAT WASHER 1" O.D.	4	Z11-02-081

TANCO AUTOWRAP CUT AND START (1992)  
MOUNTING FRAME



# TANCO AUTOWRAP CUT AND START ELECTRICAL CIRCUIT



TANCO AUTOWRAP CUT AND START UNIT

MOUNTING FRAME

PARTS LIST

<u>ITEM NO.</u>	<u>DESCRIPTION</u>	<u>QTY.</u>	<u>PART NO.</u>
1.	MAIN MOUNTING FRAME ASSY.	1	WD605-MFA
2.	MAIN FRAME MOUNTING	1	WD605-MFM
3.	M10 HEX HD SET x 30mm LONG	2	Z26-062S
4.	10mm DIA SPRING WASHER	2	Z12-02-10
5.	M10 HEX NUT	2	Z18-10

## TANCO AUTOWRAP

### Cut and Start

#### Fault Finding Summary

This summary is to be read in conjunction with operators handbook.

Note: It has been found that most faults can be attributed to a bad power supply. Therefore it is essential that power supply be taken directly from battery terminals, ensuring correct polarity. Operating voltage is 10V D.C. (under load) to 13.5V D.C.

<u>Problem</u>	<u>Proposed Remedy</u>
(1) Bale Wrap monitor does not power on	(a) Check polarity on connections to battery terminals (b) Check fuse, in bale wrap controller
(2) Plunger does not come out after 2 revolutions of turntable	(a) Ensure that left hand top switch is in auto mode. (b) Check operation in manual mode to ensure that plunger travels in and out. If the plunger does not travel in and out, check all connections from six pin plug, through slip ring to linear actuator.
(2) (i) Buzzer sound continuously "bleep", "bleep" and bale wrap monitor does not count above 2 revs.	(c) Check voltage while operating in manual mode. This voltage should be no lower than 10 V D.C. (under load). Also check connections on battery terminals. (d) Check that bale wrap monitor is counting revolutions and if not check that turntable sensor is within 6mm of magnet on turntable. (e) Carry out continuity check on turntable sensor, by taking reading across pins 2 and 3 in six pin plug.
(3) Plunger opens too soon and releases film.	(a) Check setting for function (1), which indicates number of turns to activate motor. This should be 2. (b) Check setting for function (7), which indicates non auto reset. This should be N.
(4) Plunger travels out but latch does not engage so plunger travels back in.	(a) Increase setting for function (2) which indicates the number of seconds linear actuator powers out for. Setting can be changed in increments of 0.5 sec.



Problem

- (5) Plunger snaps closed after about 6 turntable revolutions. This is caused by the Linear Actuator not stopping in park position.
  
- (6) Plunger opens while turntable rotates after buzzer sounds.
  
- (7) When machine is tipped plunger does not close.

Proposed Remedy

- (a) Reduce setting for function (4), which indicates the number of seconds required to reverse to park position. Setting can be altered in increments of 0.5 sec. In the park position there should be 5mm to 12mm clearance between cam on push plate assy and latch trigger.
  
- (a) Check setting for function (7) which indicates non auto reset. This should be N.
  
- (a) Check clearance between tip sensor on back of tipping frame and magnet on chassis. This clearance should be 5mm to 6mm.
- (b) Check that tip sensor passes magnet, if not adjust magnet position.
- (c) Check that latch trigger is activated by cam on push plate assy. If not adjust trigger.
- (d) Check setting for function (5) which indicates the number of seconds from tipping signal until motor is fully closed. This should be 1.5 sec.

## G U A R A N T E E

Subject as hereunder provided, the Sellers undertake to correct either by repair, or at their election, by replacement, any defect of material or workmanship which occurs in any of its goods within twelve months after delivery of such goods to a first user, with the exception of contractors or commercial users when warranty period is six months. In respect of Autowraps the warranty period is for 12 months or 6,000 bales which ever occurs first.

The term "goods" when used in this document means the article or articles described in invoice as sold by the Sellers but does not include equipment or proprietary parts or accessories not manufactured by the Sellers. The Sellers, however, undertake to pass on so far as they legally can to the first user the benefit of any warranty given to the Sellers by the suppliers of such equipment, parts or accessories.

This understanding shall not apply to:

- (a) Any goods which have been sold by the first user.
- (b) Any goods which have been injured by unfair wear and tear, neglect or improper use.
- (c) Any goods the identification marks of which have been altered or removed.
- (d) Any goods which have not received the basic normal maintenance such as tightening of bolts, nuts, tines, hose connections and fittings and normal lubrication with the recommended lubricant.
- (e) The use of any product on tractors exceeding the recommended horsepower.
- (f) Any goods which have been altered or repaired other than on instruction or with the written approval of the Sellers or to which any part not manufactured or having written approval by the Sellers has been fixed.
- (g) Any second-hand goods or part thereof.

Any allegedly defective part or parts returned to the Sellers must be sent carriage paid. No claim for repair or replacement will be entertained unless upon discovery of the alleged defect written notification is sent to the Sellers giving, at the same time, the name of the Buyer from whom the goods were purchased and the date of purchase together with full details of the alleged defect and the circumstances involved, also the serial number of the machine etc.,

The Sellers shall be under no liability to their Buyers and first and subsequent users of their goods or to any other person or persons for loss or damages howsoever arising in respect of either personal injuries or for special or consequential damage of any kind or from any cause whatsoever arising out of, or in any way connected with or arising from the manufacture, sale, handling, repair, maintenance, replacement or use of its goods or the failure or malfunction of any of its goods.

Representation and/or warranties made by any person (including Buyers and employees and other representatives of the Sellers) which are inconsistent or conflicting with these conditions are not binding upon the Sellers unless given in writing and signed by a Director of the Sellers.

## C L A I M S

If you wish to make a claim under guarantee:

1. Immediately, stop using the machine.
2. List the details of the machine and damaged item, (as shown inside the front cover of this booklet.
3. Consult with your Tanco dealer (supplier) and have him forward your claim and the damaged item to Tanco.